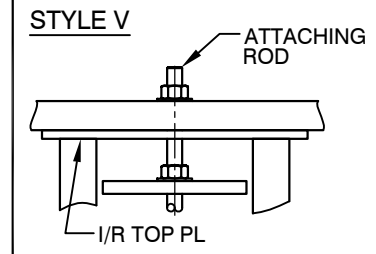
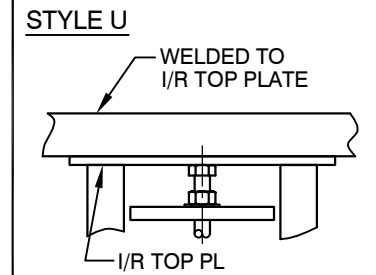
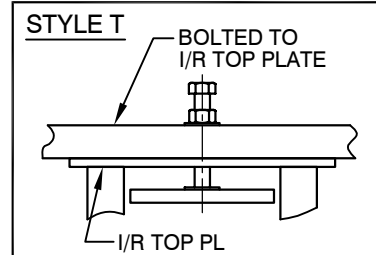


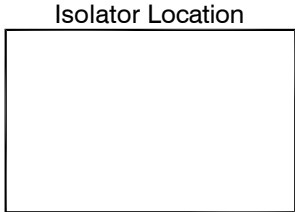
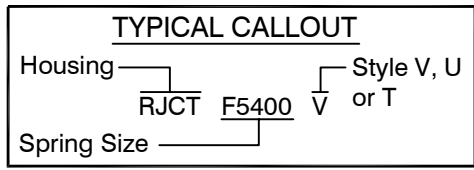
STYLE V SHOWN

ATTACHMENT STYLES



Seismic Ratings

$P_x$	=	10,000 lbs.
$P_y$	=	10,000 lbs.
$P_z$	=	16,000 lbs.



Isolator Selection	Isolator Location

Notes:

Dimensions are in inches.

+The ratio of spring diameter to its height at rated deflection is not under .8 and extra deflection is not less than 5%.

\*Operating Height is ±10% of operating height. Contact CalDyn if closer accuracy is needed.

2 Inch Deflection					
RJCT Rated load (nominal)	W x L	A x B	ØH	ØD	Oper. Height
F3420, F4298, F5400	12 x 12	10 x 10	13/16	3/4	7-3/4

**CALDYN**  
 CALIFORNIA DYNAMICS CORPORATION  
 20500 PRAIRIE ST. CHATSWORTH CA, 91311  
 Phone 323-223-3882  
 Email: caldyn@caldyn.com

"CALL US - TO SET THINGS RIGHT"

JOB: \_\_\_\_\_  
 CUSTOMER: \_\_\_\_\_  
 TAG: \_\_\_\_\_

Dwg. No. **F720** Date **1/18/17**  
 PREP By: \_\_\_\_\_ Date \_\_\_\_\_  
 CHKD By: \_\_\_\_\_ Date \_\_\_\_\_

DO NOT SCALE DRAWING

TYPE  
**RJCT**  
 SPRING ISOLATOR  
 HIGH PROTECTION  
 SEISMIC DESIGN  
 2 INCH DEF'L