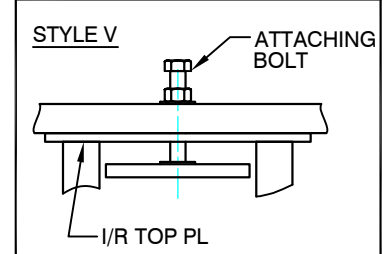
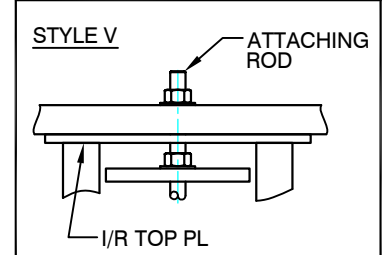
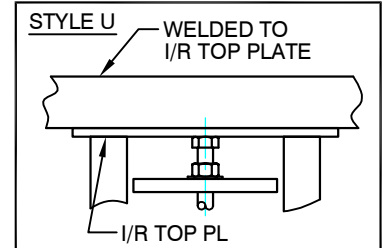
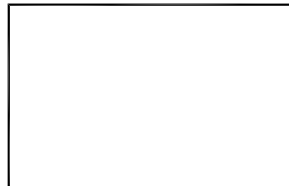


**ATTACHMENT STYLES**



**Isolator Location**



**TYPICAL CALLOUT**

Housing — RJCT — Style V, U, T

Spring Size — E3224 — V

| Isolator Selection | Isolator Location |
|--------------------|-------------------|
|                    |                   |
|                    |                   |
|                    |                   |
|                    |                   |

| 1 Inch Deflection |             |                 |       |     |               |  |
|-------------------|-------------|-----------------|-------|-----|---------------|--|
| RJCT Rated load   | W x L       | A x B           | ØH    | ØD  | *Oper. Height |  |
| E3224, E4210      | 10-1/2 x 12 | 10 x 10         | 5/8   | 3/4 | 9-1/4         |  |
| E7240             | 13 x 13     | 10-1/2 x 10-1/2 | 13/16 | 3/4 | 7             |  |
|                   |             |                 |       |     |               |  |
|                   |             |                 |       |     |               |  |
|                   |             |                 |       |     |               |  |
|                   |             |                 |       |     |               |  |

+The ratio of spring diameter to its height at rated deflection is not under .8 and extra deflection is not less than 50%.

\*Oper. Height is ±10% of operating height. Contact CalDyn if closer accuracy is needed.

Spring quantity varies per RJCT.

Dimensions are in inches.



CALIFORNIA DYNAMICS CORPORATION  
20500 PRAIRIE ST. CHATSWORTH CA, 91311  
Phone 323-223-3882  
Email: caldyn@caldyn.com

"CALL US - TO SET THINGS RIGHT"

JOB: \_\_\_\_\_  
CUSTOMER: \_\_\_\_\_  
TAG: \_\_\_\_\_

Dwg. No. **F710** Date **9/29/16**  
PREP By: \_\_\_\_\_ Date \_\_\_\_\_  
CHKD By: \_\_\_\_\_ Date \_\_\_\_\_  
**DO NOT SCALE DRAWING**

TYPE  
**RJCT**  
SPRING ISOLATOR  
HIGH PROTECTION  
SEISMIC DESIGN  
1 INCH DEF'L