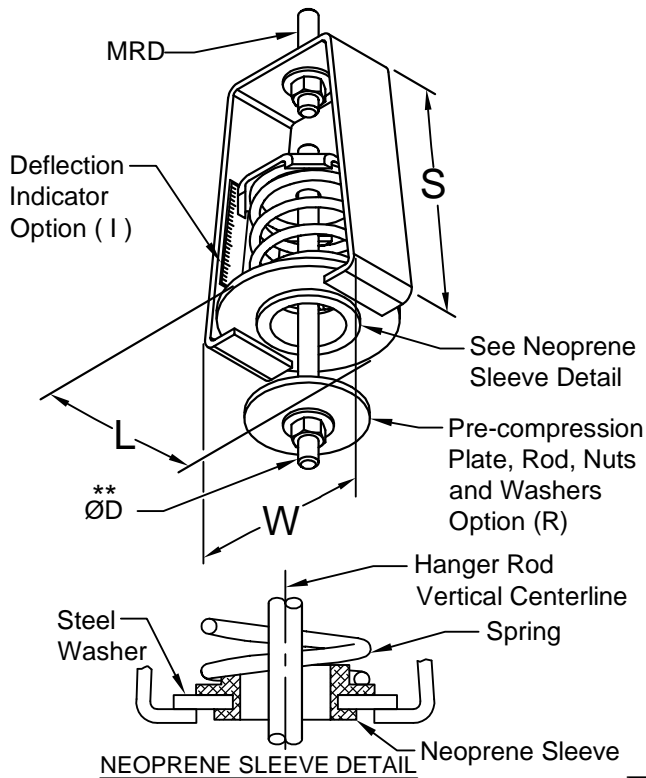
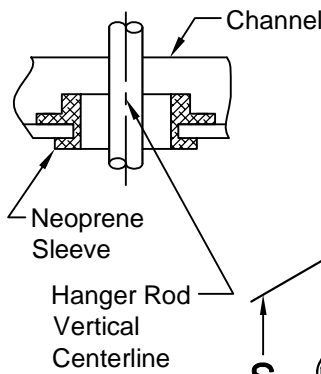


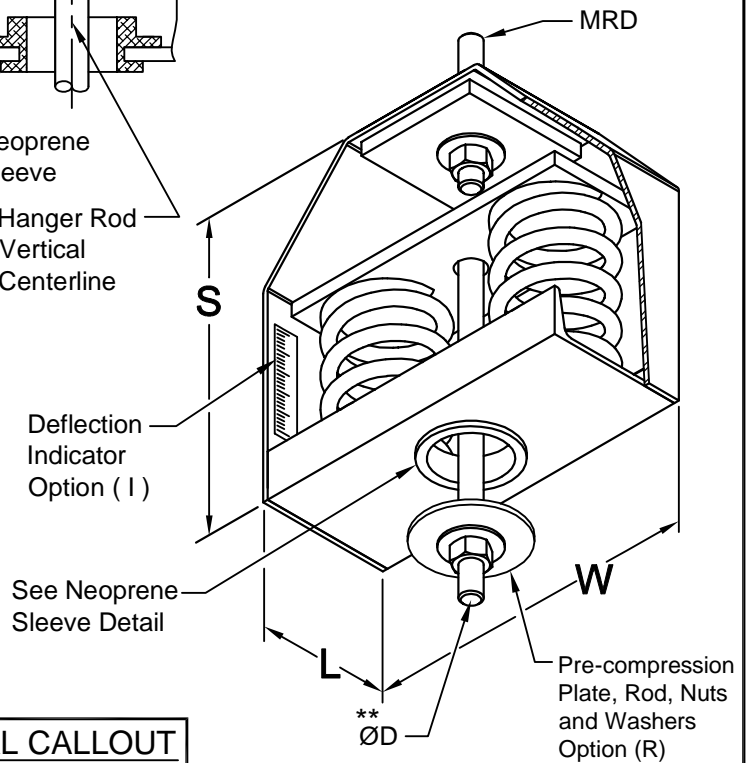
**BASIC HANGER  
CH30 FT30 - F590**



**NEOPRENE SLEEVE DETAIL**



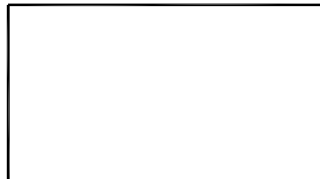
**\* EXTRA STRENGTH HANGER  
CH30 F696 - F3420**



**TYPICAL CALLOUT**

CH30 - FT 121 - R I  
(Type) - (Load) - (Options)

**HANGER LOCATION**



HANGER SELECTION	HANGER LOCATION

CH30 Max. Load (lbs)	DIMENSIONS (Inches)				
	S	W	L	MRD	ØD
FT 30 FT 41 FT 60 FT 85	6-1/2	3-5/8	2-1/2	1/2	1/2
FT 121					
FT 171 FT 241	10	5-1/2	4-1/2	5/8	5/8
F 348 F 453 F 590					
F 696* F 906* F 1180*					
F 1352* F 1574* F 1836*					
F 2318* F 2816* F 3420*	11-1/2	12-3/8	5	7/8	7/8

Type CH30 is used where uncertain alignment is anticipated during installation. At normal load the hanger rod will operate to a full 15° tilt in any direction from vertical centerline.

Spring rated deflection is 2".

\* The housings of these units are specially reinforced for extra strength.

All housing sizes have been tested to carry 5 times maximum load without failure.

\*\* The pre-compression rod is furnished with units which have the "R" option, specify Rod Diameter. This rod will extend about 3" below the Neoprene sleeve.

**Maximum Rod Diameter (MRD)**

Threaded rod, nuts and washers by others.

**Installation Instruction**

See file F96



CALIFORNIA DYNAMICS CORPORATION  
20500 PRAIRIE ST. CHATSWORTH CA, 91311  
Phone 323-223-3882  
Email: caldyn@caldyn.com

"CALL US - TO SET THINGS RIGHT"

JOB: \_\_\_\_\_  
CUSTOMER: \_\_\_\_\_  
TAG: \_\_\_\_\_

Dwg. No. <b>F598</b>	Date
PREP By:	Date
CHKD By:	Date
DO NOT SCALE DRAWING	

TYPE  
**CH30**  
  
15° Tilt  
2" DEFLECTION  
SPRING HANGER