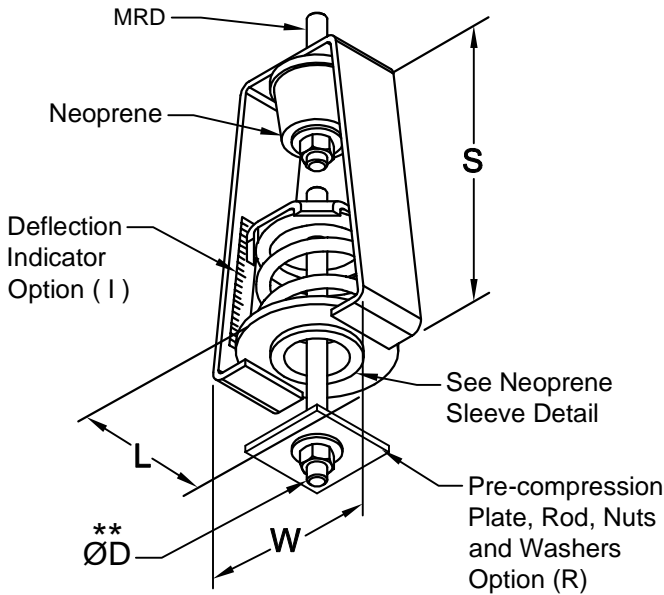
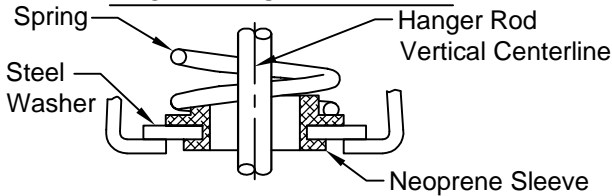


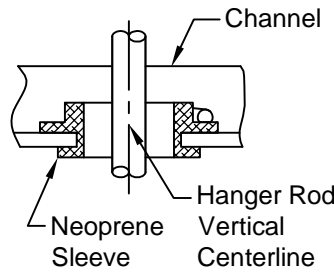
BASIC HANGER
HH30 ET42 - ET1326



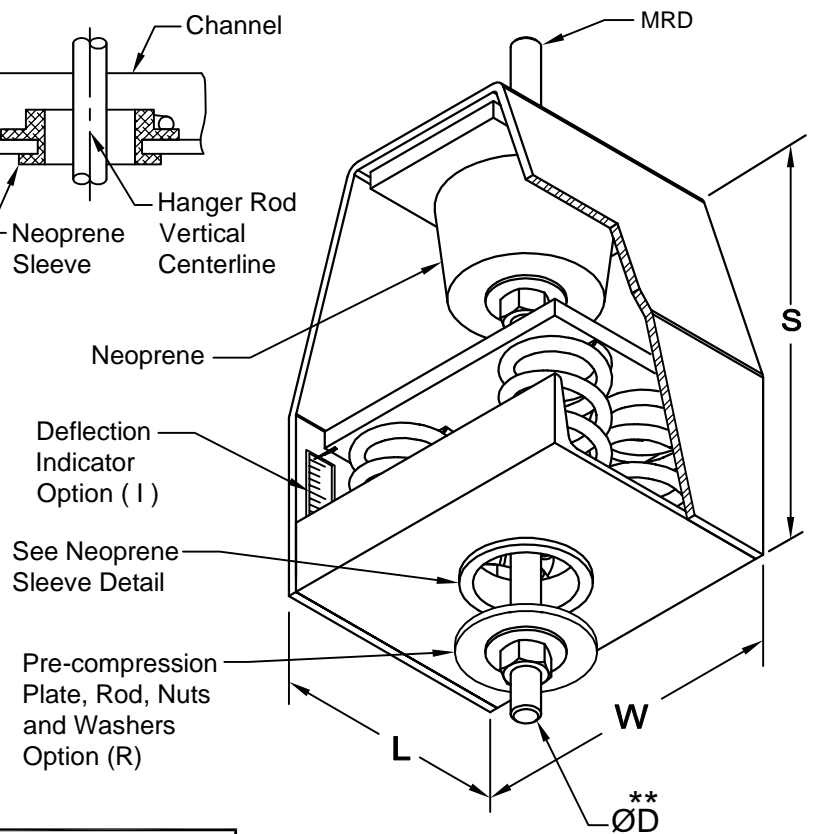
NEOPRENE SLEEVE DETAIL



NEOPRENE SLEEVE DETAIL



***EXTRA STRENGTH HANGER**
HH30 E1612 - E4920



Type HH30 is used where uncertain alignment is anticipated during installation. At rated load the hanger rod will operate to a full 15° tilt in any direction from vertical centerline.

Spring rated deflection is 1" + Neoprene rated Deflection 1/2" = 1-1/2" deflection.

* The housings of these units are specially reinforced for extra strength.

All housing sizes have been tested to carry 5 times maximum load without failure.

**The pre-compression rod is furnished with units which have the "R" option specify Rod Diameter. This rod will extend about 3" below the Neoprene sleeve.

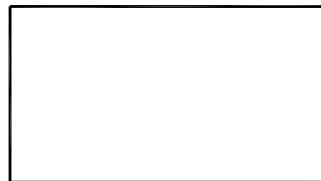
Maximum Rod Diameter (MRD)
Threaded rod, nuts and washers by others.

Installation Instruction
See file F96

TYPICAL CALLOUT

HH30 - ET 129 - R I
(Type) - (Load) - (Options)

HANGER LOCATION



HANGER SELECTION	HANGER LOCATION

HH30 Max. Load (Lbs)	DIMENSIONS (Inches)				
	S	W	L	MRD	ØD
ET20 ET42 ET80 ET129	6-1/2	3-5/8	2-1/2	1/2	1/2
ET194 ET255	7-1/2	4	3	3/4	
ET347 ET473	8-1/2	5-5/16	4-1/4	7/8	5/8
ET667 ET940 ET1326	10	5-7/8	4-3/4		3/4
E1612*	11-1/4	10	4	1	7/8
E2060* E2460* E2980*					1
E4120* E4920*					1
	12	9-1/2	7		

CALDYN

CALIFORNIA DYNAMICS CORPORATION
20500 PRAIRIE ST. CHATSWORTH CA, 91311
Phone 323-223-3882
Email: caldyn@caldyn.com

"CALL US - TO SET THINGS RIGHT"

JOB: _____
CUSTOMER: _____
TAG: _____

Dwg. No. **F596** Date **11/30/16**
PREP By: _____ Date _____
CHKD By: _____ Date _____

DO NOT SCALE DRAWING

TYPE **HH30**
15° Tilt
1-1/2" DEFLECTION
COMBINATION
HANGER
SPRING & NEOPRENE