

The CH30 is used where uncertain alignment is anticipated during installation. At rated load the hanger rod will operate to a full 15° tilt in any direction from vertical rod centerline.

Hanger rod centers on pressure cup / plate ensure alignment of components.

Elastomeric Elements: Neoprene.

The "R" option, pre-compression plate, rod washer and nut are furnished. This will extend below the bottom of the hanger housing.

Outside Spring Diameter: Not less than 80 % of the compressed height of the spring at rated load.

Minimum Additional Travel: 50 % of the required deflection at rated load.

Lateral Stiffness: More than 80 % of rated vertical stiffness.

All housings have been tested to carry 5 times maximum load without failure.

UR Ø (Upper Rod) & LR Ø (Lower Rod)  
Threaded rod, nuts and washers by others.

Installation Instruction  
See file F97

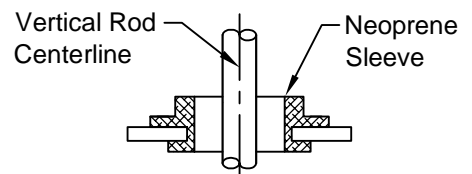
**TYPICAL CALLOUT**  
CH30 - ET 129 - R I  
(Type) - (Load) - (Options)

**HANGER LOCATION**



HANGER SELECTION	HANGER LOCATION

**NEOPRENE SLEEVE DETAIL**



CH30 Max. Load (lbs)	DIMENSIONS (Inches)				
	S	W	L	MRD	ØD
ET20 ET42 ET80 ET129 ET194 ET255	4-3/4	3-5/8	2-1/2	1/2	1/2
ET347 ET473	6	5-5/16	4-1/4	3/4	5/8
ET667 ET940 ET1326	7	5-7/8	4-3/4	7/8	3/4 7/8
E1612*	8-1/4	10	4	1	1
E2060 E2460 E2980					
E4120 E4920					
	8-1/2	9-1/2	7	1-1/8	1-1/8

**CALDYN**  
CALIFORNIA DYNAMICS CORPORATION  
20500 PRAIRIE ST. CHATSWORTH CA, 91311  
Phone 323-223-3882  
Email: caldyn@caldyn.com

"CALL US - TO SET THINGS RIGHT"

JOB: \_\_\_\_\_  
CUSTOMER: \_\_\_\_\_  
TAG: \_\_\_\_\_

Dwg. No. **F595**  
Date \_\_\_\_\_  
PREP By: \_\_\_\_\_ Date \_\_\_\_\_  
CHKD By: \_\_\_\_\_ Date \_\_\_\_\_  
DO NOT SCALE DRAWING

TYPE  
**CH30**  
15° Tilt  
1" DEFLECTION  
SPRING HANGER