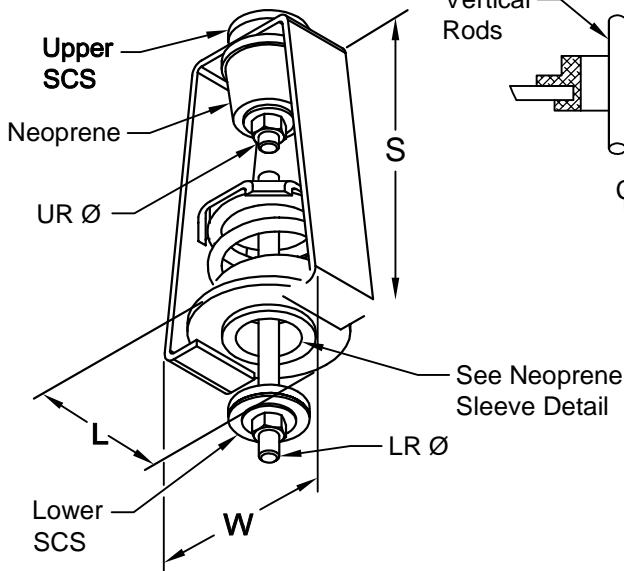
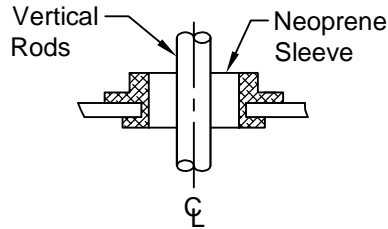


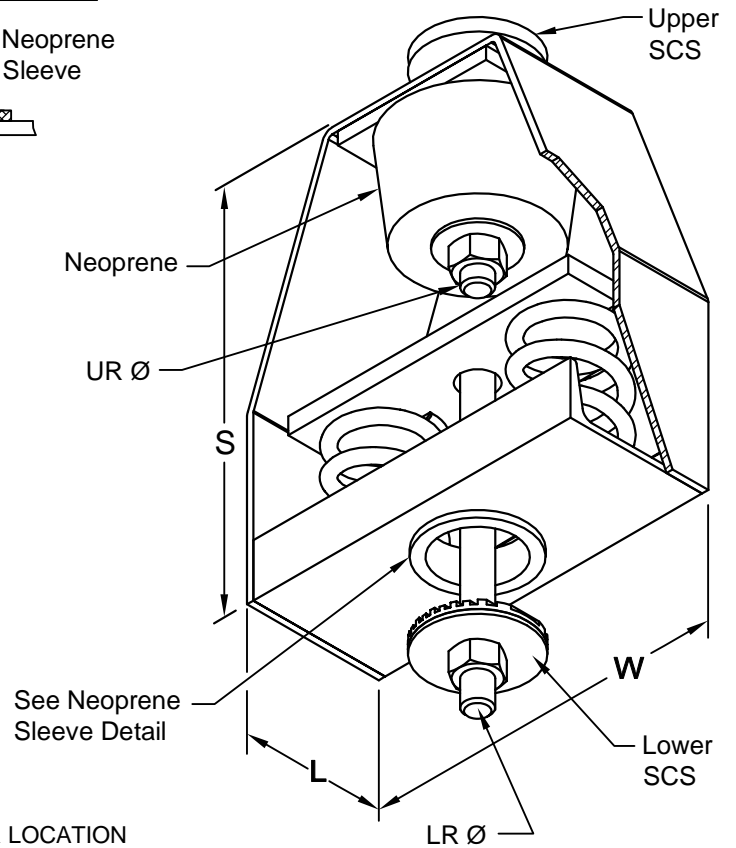
# HH30SCS ET20 - ET1326



## NEOPRENE SLEEVE DETAIL



# HH30SCS E1612 - E4920



The HH30 is used where uncertain alignment is anticipated during installation. At rated load the hanger rod will operate to a full 15° tilt in any direction from vertical rod centerline.

Spring rated deflection is 1" + Neoprene rated deflection 1/2" = 1-1/2" deflection.

Hanger rod centers on pressure cup / plate ensure alignment of components.

Elastomeric Elements: Neoprene.

Outside Spring Diameter: Not less than 80% of the compressed height of the spring at rated load.

Minimum Additional Travel: 50% of the required deflection at rated load.

Lateral Stiffness: More than 80% of rated vertical stiffness.

All housings have been tested to carry 5 times maximum load without failure.

UR Ø (Upper Rod) & LR Ø (Lower Rod)  
Threaded rods, nuts and washers by others.

Installation Instruction

See file F97

## HANGER LOCATION



TYPICAL CALLOUT  
HH30SCS - ET129  
(Type) - (Load)

HANGER SELECTION	HANGER LOCATION

Seismic Cushion Stop (SCS)	
	Upper long life Rubber Cushion
	Lower long life Rubber Cushion. Bonded to steel plate.

Load Max (lbs)	DIMENSIONS (Inches)					
	S	W	L	UR Ø	SCS Ø	LR Ø
ET 20 ET 42 ET 80 ET 129	6-1/2	3-5/8	2-1/2	1/2	2-3/8	1/2
ET 194 ET 255						
ET 347 ET 473						
ET 667 ET 940 ET 1326						
E 1612	11-1/4	10	4	1	4	1
E 2060 E 2460 E 2980						
E 4120 E 4920						

**CALDYN**

CALIFORNIA DYNAMICS CORPORATION  
20500 PRAIRIE ST. CHATSWORTH CA, 91311  
Phone 323-223-3882  
Email: caldyn@caldyn.com

"CALL US - TO SET THINGS RIGHT"

JOB:

CUSTOMER:

TAG:

Dwg. No.

F594

PREP By:

CHKD By:

DO NOT SCALE DRAWING

Date

Date

Date

TYPE

**HH30SCS**

15° Tilt  
1-1/2" DEFLECTION  
COMBINATION HANGER  
SPRING & NEOPRENE  
WITH SEISMIC  
CUSHION STOP