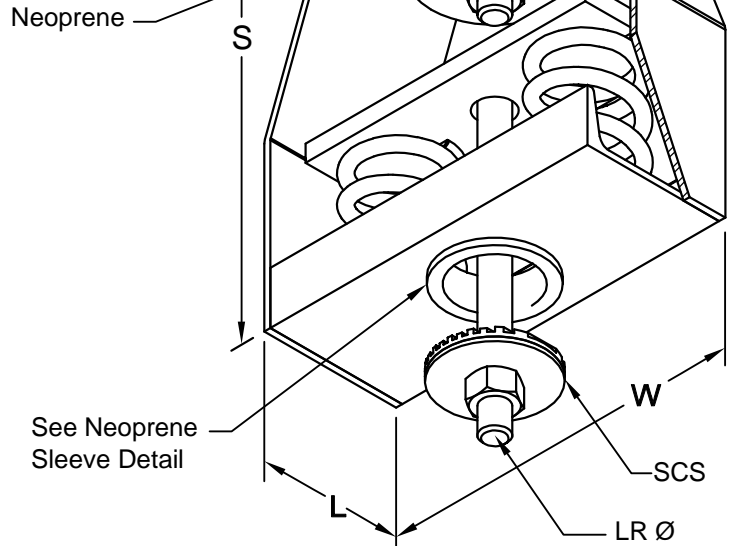
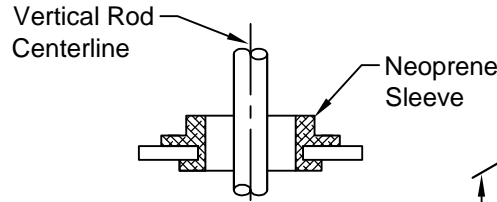
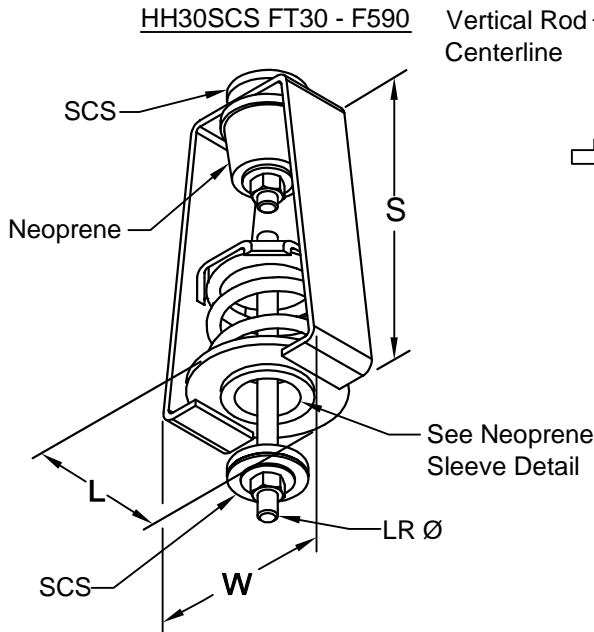


NEOPRENE SLEEVE DETAIL

HH30SCS F696 - F3420



The HH30SCS is used where uncertain alignment is anticipated during installation. At rated load the hanger rod will operate to a full 15° tilt in any direction from vertical rod centerline.

Spring rated deflection is 1" + Neoprene rated deflection 1/2" = 1-1/2" deflection.

Hanger rod centers on pressure cup / plate ensure alignment of components.

Elastomeric Elements: Neoprene.

Outside Spring Diameter: Not less than 80% of the compressed height of the spring at rated load.

Minimum Additional Travel: 50% of the required deflection at rated load.

Lateral Stiffness: More than 80% of rated vertical stiffness.

All housings have been tested to carry 5 times maximum load without failure.

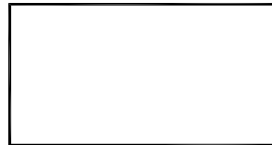
UR Ø (Upper Rod) & LR Ø (Lower Rod)

Threaded rods, nuts and washers by others.

Installation Instruction

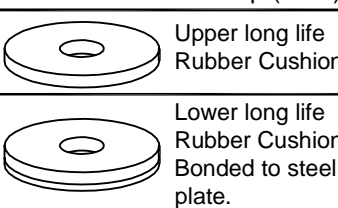
See file F97

HANGER LOCATION



HANGER SELECTION	HANGER LOCATION

Seismic Cushion Stop (SCS)



TYPICAL CALLOUT

HH30SCS - FT241
(Type) - (Load)

Max. Load (lbs)	DIMENSIONS (Inches)					
	S	W	L	UR Ø	SCS Ø	LR Ø
FT 30 FT 41 FT 60 FT 85 FT 121	8	5	4	1/2	2-3/8	1/2
FT 171 FT 241 F 348	10	5-1/4	4-1/2			5/8
F 453 F 590	11			3/4		
F 696 F 906 F 1180	12	10-3/8	4	7/8	3	3/4
F 1352 F 1574 F 1836						7/8
F 2318 F 2816 F 3420	14-1/4	12-3/8	5	1	4	

CALDYN

CALIFORNIA DYNAMICS CORPORATION

20500 PRAIRIE ST. CHATSWORTH CA, 91311

Phone 323-223-3882

Email: caldyn@caldyn.com

"CALL US - TO SET THINGS RIGHT"

JOB:

CUSTOMER:

TAG:

Dwg. No.

F592

PREP By:

CHKD By:

DO NOT SCALE DRAWING

Date

Date

Date

TYPE

HH30SCS

15° Tilt

2-1/2" DEFLECTION
COMBINATION HANGER
SPRING & NEOPRENE
WITH SEISMIC
CUSHION STOP