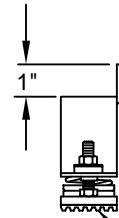
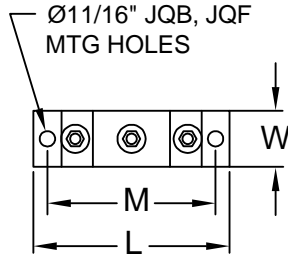
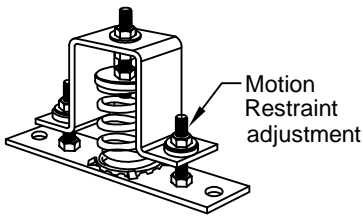


Style V

Attachment to hole in equipment

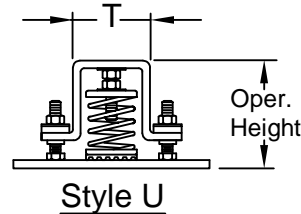
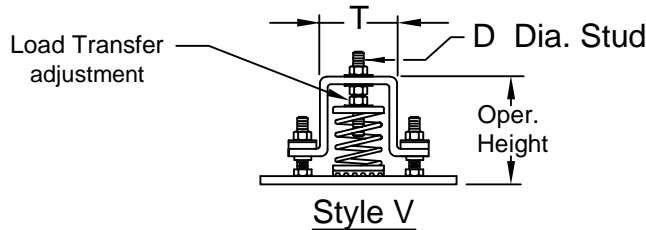


Style R

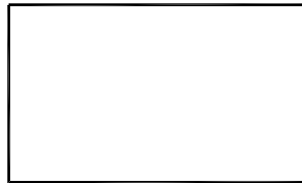
for attaching to opposite side of equipment.

Option P

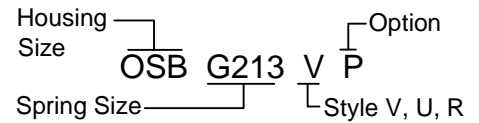
Neoprene Base Pad Regardless of Style



Isolator Locations



TYPICAL CALLOUT



NOTES:

Dimensions in Inches. Loads in pounds.

Style K Load Transfer nut is pinned to Stud.

Adjust Load Transfer while Motion Restraint adjustments are loose.

All Type OS Isolator/Restrains feature large diameter springs with O.D. not less than 80% of rated deflection height.

For compact support of heavy loads, some OS's include inner springs.

For low profile support of heavy loads, OSE's have clustered springs.

Installation Instruction

See file F78

Isolator Locations	Isolator Selections

RATED LOAD	
G Springs 3" Deflection	
OSB	OSF
3YW162	G853
G213	3YW1036
G303	G1223
3YW325	
3YW496	

Housing Size	L	W	M	T	D	Approx. Oper. HT.
OSB	10-1/2	3-1/2	9	4	1/2	5 - 1/2
OSF	14	5	12	6	5/8	8



CALIFORNIA DYNAMICS CORPORATION
20500 PRAIRIE ST. CHATSWORTH CA, 91311
Phone 323-223-3882
Email: caldyn@caldyn.com

"CALL US - TO SET THINGS RIGHT"

JOB: _____
CUSTOMER: _____
TAG: _____

Dwg. No. **F487** Date _____
PREP By: _____ Date _____
CHKD By: _____ Date _____
DO NOT SCALE DRAWING

TYPE **OS**

STEEL SPRING ISOLATOR/RESTRAINT
3" DEFLECTION