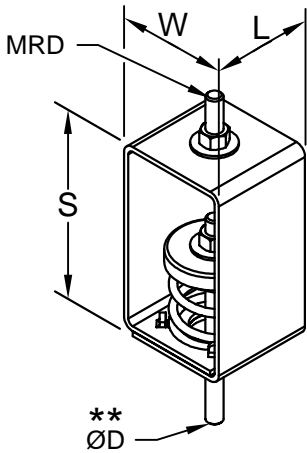
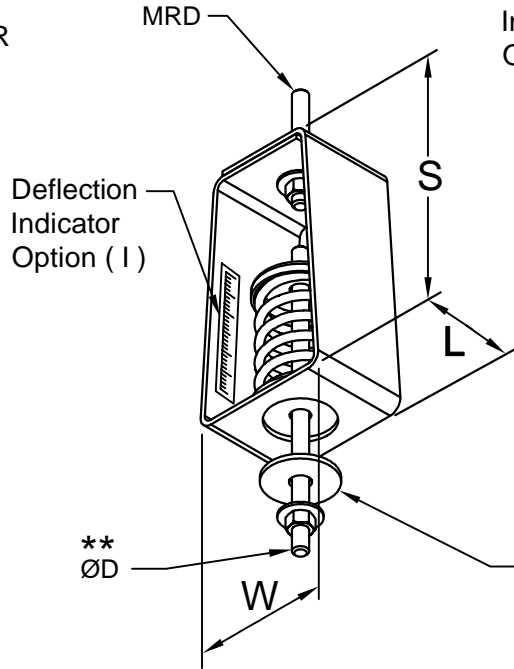


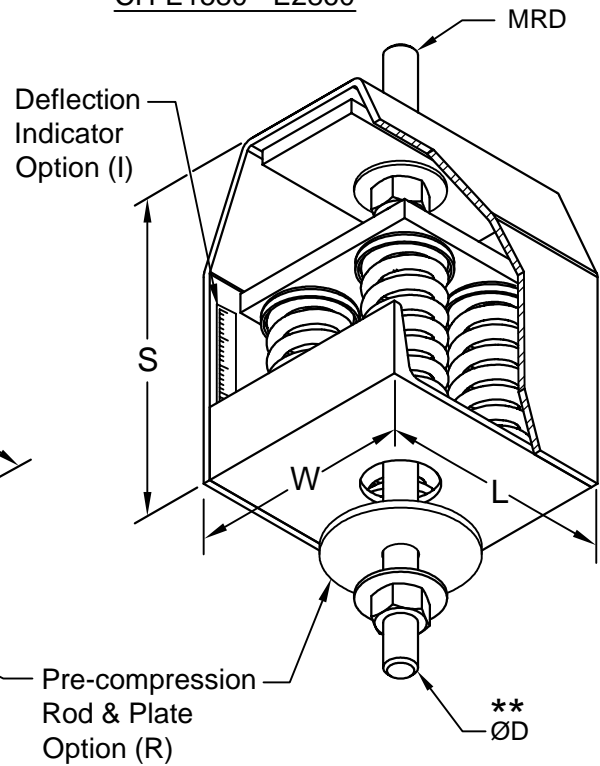
LIGHT WEIGHT HANGER
CH-E21 - E415



BASIC HANGER
CH-E500-E1060



*** EXTRA STRENGTH HANGER**
CH-E1580 - E2860



Notes:

* The housings of these units are specially reinforced for extra strength

** The pre-compression rod is furnished with units which have the "R" option (specify Rod Dia) this rod will extend about 3" below the bottom of the hanger housing.

Maximum Rod Diameter (MRD)
Rod, nuts and washers are by others.

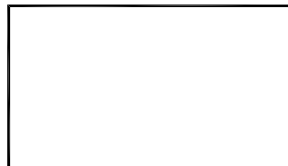
Minimum Additional Travel
50% of required deflection at rated load.

Installation Instructions
See file F96

TYPICAL CALLOUT

CH - E106 - R I
(Type) - (Size) - (Options)

Hanger Location



Hanger Selection	Hanger Selection

CH Max. Load (lbs)	DIMENSIONS (Inches)				
	S	W	L	MRD	ØD
E 21 E 55 E 79 E 106	4-3/4	2-3/4	2-1/2	1/2	3/8
1/2					
E 143 E 187 E 244	6-1/2	3-5/8	2-1/2	3/4	5/8
3/4					
E 500 715 1060	8-1/4	6	6	7/8	3/4
7/8					
7/8					

CALDYN

CALIFORNIA DYNAMICS CORPORATION
20500 PRAIRIE ST. CHATSWORTH CA, 91311
Phone 323-223-3882
Email: caldyn@caldyn.com

"CALL US - TO SET THINGS RIGHT"

JOB:

CUSTOMER:

TAG:

Dwg. No.

F361

PREP By:

CHKD By:

DO NOT SCALE DRAWING

Date

10/12/16

Date

Date

TYPE

CH

1" DEFLECTION
SPRING HANGER