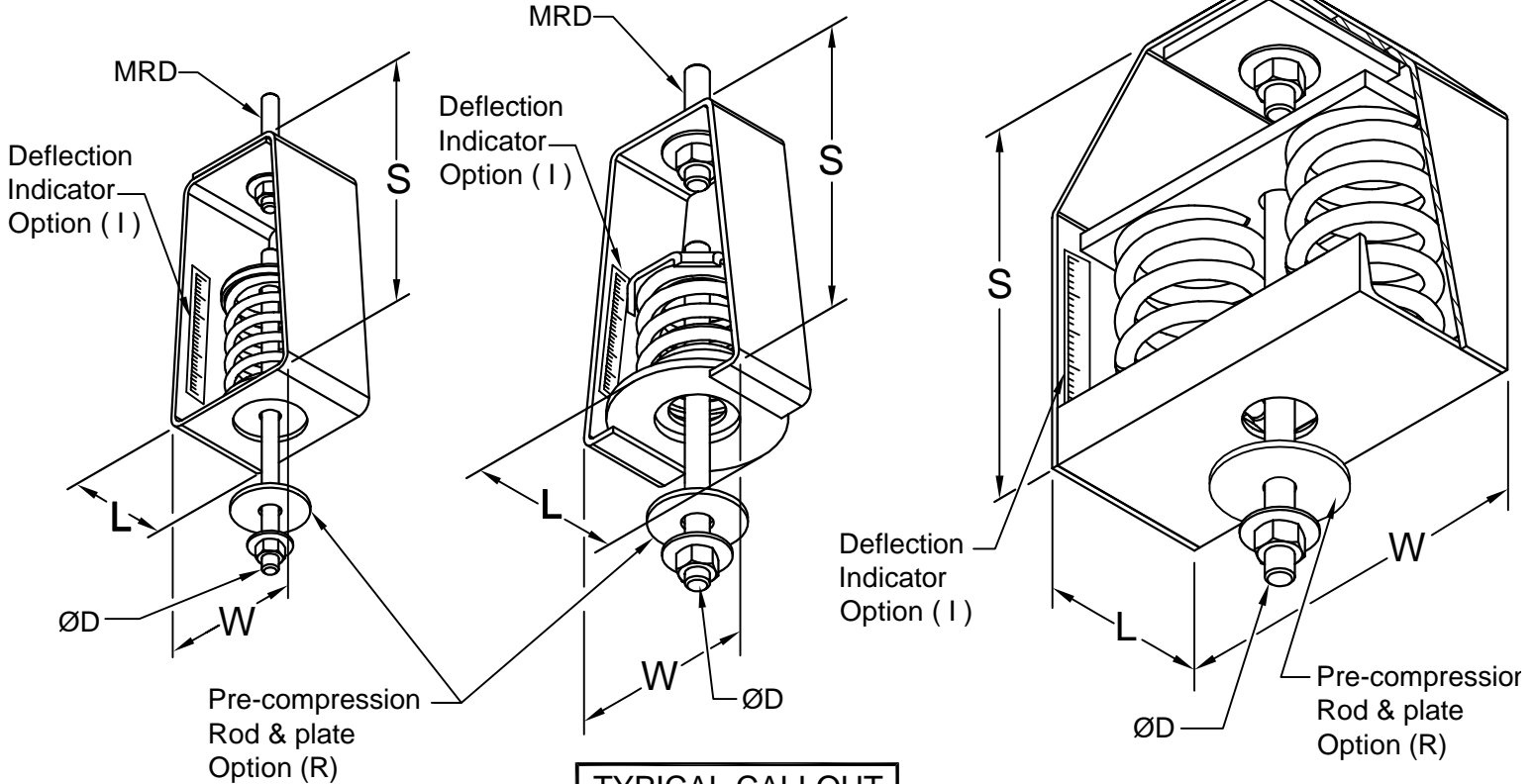


BASIC HANGER
CH-F59 - CH-F195

BASIC HANGER
CH-FT241 - CH-F918

***EXTRA STRENGTH HANGER**
CH-F1159 - CH-F3420



Notes:

*The housings of these units are specially reinforced for extra strength.

All housing sizes have been tested to carry 5 times maximum load without failure.

**The pre-compression rod is furnished with units which have the "R" option (specify Rod Dia.). This rod will extend about 3" below the bottom of hanger housing.

Maximum Rod Diameter (MRD)
Rod, nuts and washer are by others.

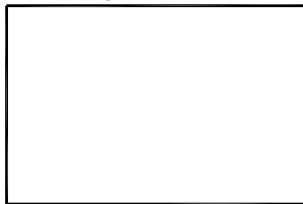
Minimum Additional Travel
50% of rated deflection at rated load.

Installation Instructions
See file F96

TYPICAL CALLOUT

CH - F120 - R I
(Type) - (Load) - (Options)

Hanger Location



Hanger Selection	Hanger Selection

CH Max. Load (lbs)	DIMENSIONS (Inches)				
	S	W	L	MRD	ØD
F 59 F 83 F 120 F 155 F 195	6-1/2	3-5/8	2-1/2	1/2	1/2
FT 241					
F 348 F 453	8-1/2	5-1/2	4-1/2	5/8	5/8
F 590 F 676 F 787 F 918					
F 1159*				11	5
F 1408* F 1710*					
F 2318* F 2816* F 3420*	11-1/4	11	5	7/8	7/8



CALIFORNIA DYNAMICS CORPORATION
20500 PRAIRIE ST. CHATSWORTH CA, 91311
Phone 323-223-3882
Email: caldyn@caldyn.com

"CALL US - TO SET THINGS RIGHT"

JOB: _____
CUSTOMER: _____
TAG: _____

Dwg. No. **F358** Date **10/12/16**
PREP By: _____ Date _____
CHKD By: _____ Date _____
DO NOT SCALE DRAWING

TYPE
CH
SPRING HANGER
2" DEFLECTION