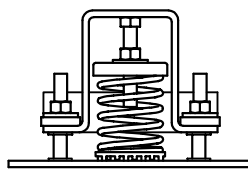
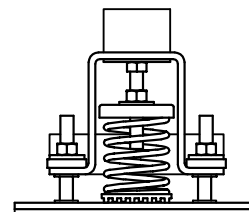


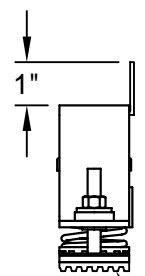
* CQA
Style V



CQA
Style U



CQA
Style R



Option P

Notes

Dimensions in Inches. Loads in Pounds. Isolator drawings are not to scale.

Adjust Load Transfer while Motion Restraint adjustments are loose.

Option P

Neoprene Pad 1/4" Thick under base plate regardless of Isolator Style.

Spring Finish

Powder Coated

Metal Finish see tabulation.

Installation Instruction

See file F82

Isolator Location



Isolator Selection	Isolator Selection

RATED LOAD

1" Defl.	2" Defl.
E Springs	F Springs
E21	F33
E55	F59
E79	F83
E106	F120
E143	F155
E187	F195
E244	F236
E318	F300
E415	F395
E500	
E633	
E690	
E801	

Metal Finish

Surface Treatment	Isolator Placement
Hot Dip Galvanized (HDG)	Outdoor (Exterior)
**Zinc Plated Electrogalvanized	Indoor (Interior)

**Default Finish

Seismic Ratings (LRFD)

HORIZONTAL X Direction	HORIZONTAL Y Direction	VERTICAL Z Direction
1,983 Lbs	1,163 Lbs	4,317 Lbs

TYPICAL CALLOUT

Housing Option
CQA E500 V P
 Spring Size Style V, U, R

* CQA Style V with 2" Deflection springs were tested as per OPM 0401-13. See CalDyn file F315.

CALDYN

CALIFORNIA DYNAMICS CORPORATION

20500 PRAIRIE ST. CHATSWORTH CA, 91311

Phone 323-223-3882

Email: caldyn@caldyn.com

"CALL US - TO SET THINGS RIGHT"

JOB:

CUSTOMER:

TAG:

Dwg. No.

F317

PREP By:

CHKD By:

DO NOT SCALE DRAWING

Date

10/19/20

Date

Date

TYPE

CQA

VIBRATION ISOLATOR
WITH RESTRAINTS

1" & 2" DEFLECTION