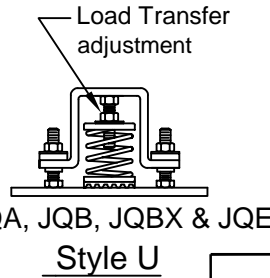
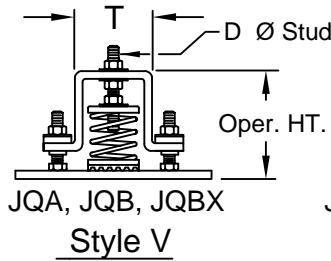
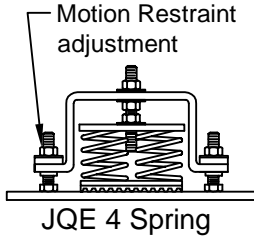


Option P
Neoprene Pad regardless of Style



Notes:

Dimensions in Inches. Loads in Pounds.

Neoprene pad 1/4" thick under spring regardless of style.

Adjust Load Transfer while Motion Restraint adjustments are loose.

All Type JQ Isolator/Restraints feature large diameter springs with O.D. not less than 80% of rated deflection height, except 1580 with 2-1/4" travel to collapse.

For compact support of heavy loads, some JQ's include inner springs. For low profile support of heavy loads, JQE's have clustered springs.

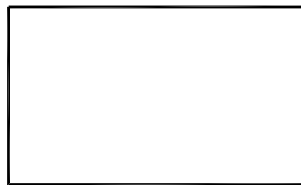
Surface Treatment

Housings Hot Dip Galvanized (HDG)
Hardware Zinc Plate.
Springs Powder Coated.

Installation Instructions

See file F78

Isolator Locations



Isolator Locations	Isolator Selections

TYPICAL CALLOUT

Housing Size **JQA E500 R P** Option
Spring Size _____ Style V, U, R

RATED LOAD		
E Springs 1" Deflection		
JQA	JQB/JQBX	JQE
E21	ET255	E976
E55	ET347	E1272
E79	ET473	E1660
E106	E630	E2000
E143	E806	E2532
E187	E1030	E3204
E244	E1230	E4128
E318	E1490	6080
E415	E1810	
E500	E2210	
E633		
E690		
E801		

OPA - 0070 PRE-APPROVED MAXIMUM ALLOWABLE LOADS		
SIZE	HORIZ.	VERT.
JQA	800	1660
JQB	1000	1600
JQBX	1500	2000
JQE	3200	4300

Housing Size	L	W	M	T	D	Approx. Oper. HT.
JQA	7	2	6	2 - 3/4	3/8	4 - 1/2
JQB/JQBX	10-1/2	3-1/2	9	4	1/2	5 - 1/2
JQE	14	5	12	6	5/8	5



CALIFORNIA DYNAMICS CORPORATION
20500 PRAIRIE ST. CHATSWORTH CA, 91311
Phone 323-223-3882
Email: caldyn@caldyn.com

"CALL US - TO SET THINGS RIGHT"

JOB: _____
CUSTOMER: _____
TAG: _____

Dwg. No. **308** Date _____
PREP By: _____ Date _____
CHKD By: _____ Date _____
DO NOT SCALE DRAWING

TYPE **JQ**
ISOLATOR/RESTRAINTS
WITH CALIFORNIA
PRE-APPROVED
SEISMIC PROTECTION
OPA - 0070
1" DEFLECTION