



CALIFORNIA DYNAMICS CORP.

LOS ANGELES, CA. 90032-3106

PH (323) 223 - 3882

FAX (323) 223 - 7941

email: caldyn@earthlink.net



# APPROVED Fixed Equipment Anchorage

Office of Statewide Health Planning and Development

OPA-0070

on Wednesday, December 01,  
2004

\*\*\*\* Valid for 3 Years Maximum \*\*\*\*

*John D. Gillengerten*  
John D. Gillengerten (916)654-3547

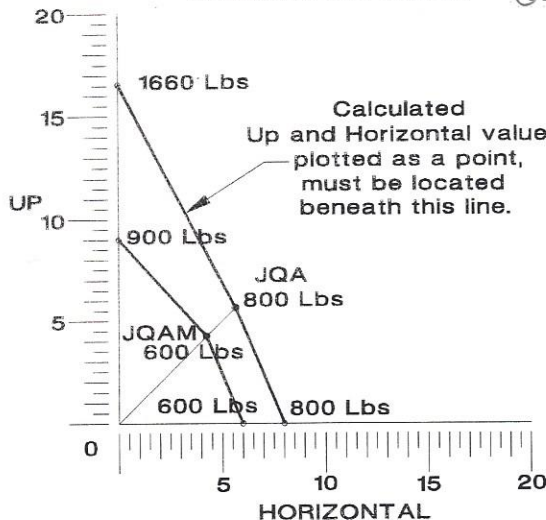
TYPE JQ

ISOLATOR/RESTRAINT  
W/CALIF.PRE-APPROVED  
SEISMIC PROTECTION  
OPA - 0070

FILE 302

11/08/04

INTERACTION CURVE



## NOTICE

301 File page describing  
PRE-APPROVAL USE  
and applicable NOTES  
is included in this  
OPA-0070 PRE-APPROVAL

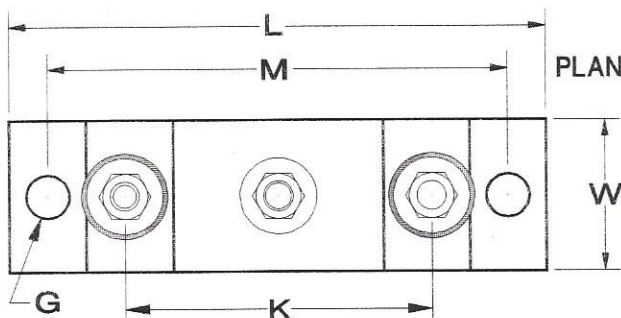


## ALLOWABLE STRESS DESIGN

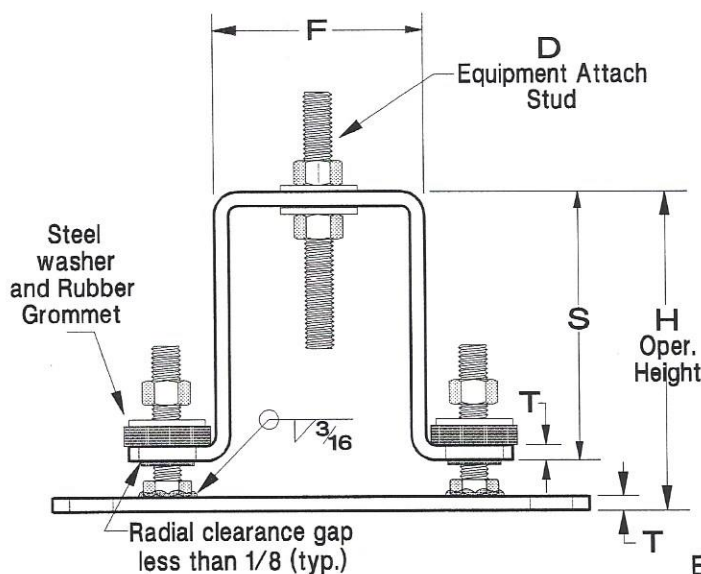
### MECHANICAL AND ELECTRICAL COMPONENTS COEFFICIENTS

Mechanical and Electrical Component or Element	Component Amplification Factor $a_p$	Component Response Modification Factor $R_p$
HVAC System Vibration Isolated	2.5	1.5
General Electrical Equipment	2.5	1.5

JQ Maximum clearance not greater than 1/4 inch  
Design force may be taken as  $F_p$



All dimensions in inches.



ELEVATIONS

	JQAM	JQA
L	7	7
W	2	2
D	3/8-NC	3/8-NC
M	6	6
H	2 1/2	4 1/2
G	9/16	9/16
K	4	4
F	2 3/4	2 3/4
S	1 3/4	3 1/2
T	1/8	3/16