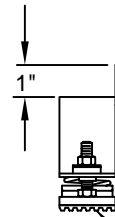
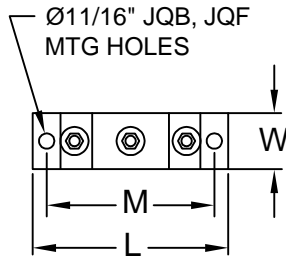
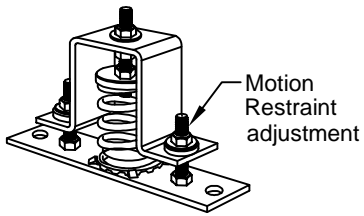


**Style V**

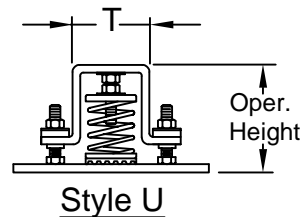
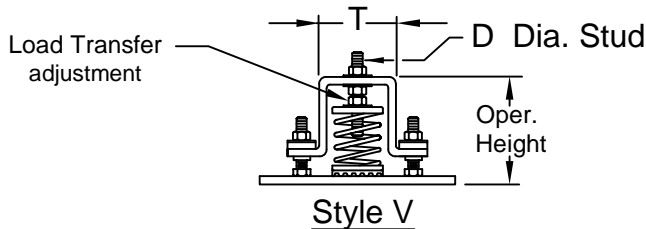
Attachment to hole in equipment



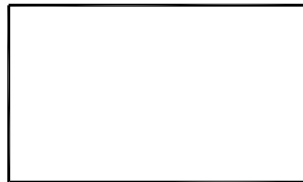
**Style R**  
for attaching to opposite side of equipment.

**Option P**

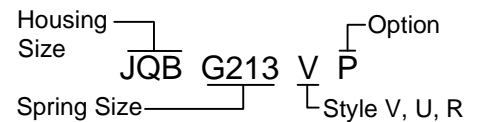
Neoprene Base Pad Regardless of Style



**Isolator Locations**



**TYPICAL CALLOUT**



**NOTES:**

Dimensions in Inches. Loads in pounds.

Style K Load Transfer nut is pinned to Stud.

Adjust Load Transfer while Motion Restraint adjustments are loose.

All Type OS Isolator/Restrains feature large diameter springs with O.D. not less than 80% of rated deflection height.

For compact support of heavy loads, some OS's include inner springs.  
For low profile support of heavy loads, OSE's have clustered springs.

**Installation Instruction**

See file F78

Isolator Locations	Isolator Selections

RATED LOAD	
G Springs 3" Deflection	
JQB	JQF
3YW162	G853
G213	3YW1036
G303	G1223
3YW325	
3YW496	

Housing Size	L	W	M	T	D	Approx. Oper. HT.
JQB	10-1/2	3-1/2	9	4	1/2	5 - 1/2
JQF	14	5	12	6	5/8	8



CALIFORNIA DYNAMICS CORPORATION  
5572 ALHAMBRA AVE. LOS ANGELES CA, 90032  
PH. 323-223-3882 FAX. 323-223-7941  
email: caldyn@earthlink.net

"CALL US - TO SET THINGS RIGHT"

Assoc. Member



JOB: \_\_\_\_\_  
CUSTOMER: \_\_\_\_\_  
TAG: \_\_\_\_\_

Dwg. No. **F487** Date **10/11/16**  
PREP By: \_\_\_\_\_ Date \_\_\_\_\_  
CHKD By: \_\_\_\_\_ Date \_\_\_\_\_  
DO NOT SCALE DRAWING

TYPE  
**OS**  
STEEL SPRING  
ISOLATOR/RESTRAINT  
3"  
DEFLECTION