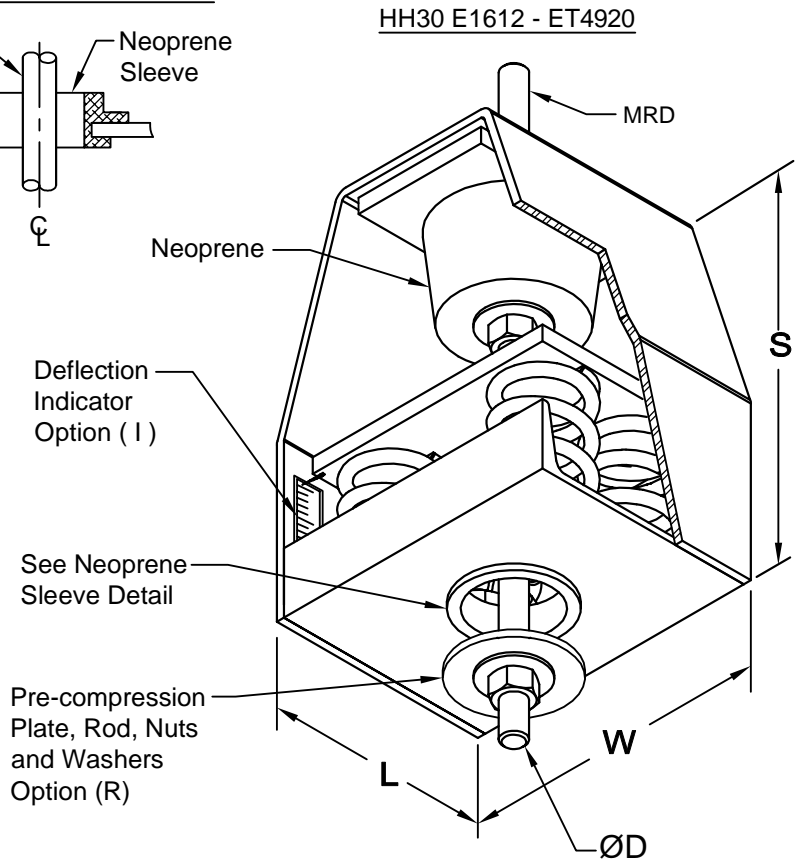
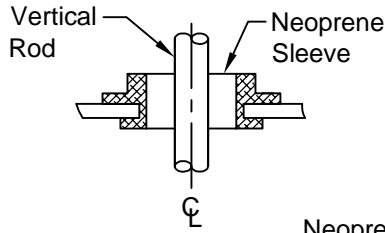


NEOPRENE SLEEVE DETAIL



The HH30 is used where uncertain alignment is anticipated during installation. At rated load the hanger rod will operate to a full 15° tilt in any direction from vertical rod centerline.

The pre-compression rod is furnished with units which have the "R" option, specify Rod Dia. This rod will extend about 3" below the Neoprene sleeve.

Spring rated deflection is 1" + Neoprene rated deflection 1/2" = 1-1/2" deflection.

Elastomeric Elements: Neoprene.

Outside Spring Diameter: Not less than 80% of the compressed height of the spring at rated load.

Minimum Additional Travel: 50% of the required deflection at rated load.

Lateral Stiffness: More than 80% of rated vertical stiffness

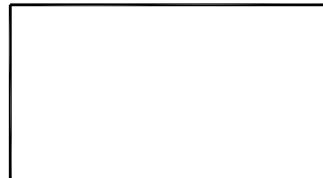
All housing sizes have been tested to carry 5 times maximum load without failure.

MRD (Maximum Rod Diameter)
Threaded rod, nuts and washers by others.

Installation Instruction
See file F96

TYPICAL CALLOUT
HH30 - ET 129 - R, I
(Type) - (Load) - (Options)

HANGER LOCATION



HANGER SELECTION	HANGER LOCATION

HH30 Max. Load (Lbs)	DIMENSIONS (Inches)				
	S	W	L	MRD	ØD
ET20 ET42 ET80 ET129	6-1/2	3-5/8	2-1/2	1/2	1/2
ET194 ET255	7-1/2	4	3	3/4	
ET347 ET473	8-1/2	5-5/16	4-1/4	7/8	5/8
ET667 ET940 ET1326	10	5-7/8	4-3/4		3/4
E1612	11-1/4	10	4	1	7/8
E2060 E2460 E2980					1
E4120 E4920					12



CALIFORNIA DYNAMICS CORPORATION
5572 ALHAMBRA AVE. LOS ANGELES CA, 90032
PH. 323-223-3882 FAX. 323-223-7941

email: caldyn@earthlink.net
"CALL US - TO SET THINGS RIGHT"
Assoc. Member **VISCMA**

JOB: _____
CUSTOMER: _____
TAG: _____

Dwg. No. **F596** Date **06/1/20**
PREP By: _____ Date _____
CHKD By: _____ Date _____

TYPE **HH30**
15° Tilt
1-1/2" DEFLECTION
COMBINATION
HANGER
SPRING & NEOPRENE

DO NOT SCALE DRAWING