

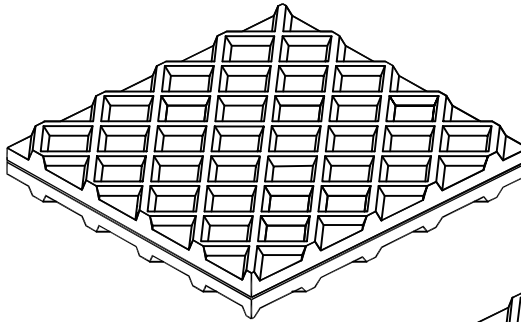
**EP - PAD**

Is useful under equipment of all speeds.  
To minimize transmission of disturbances from entering floor.

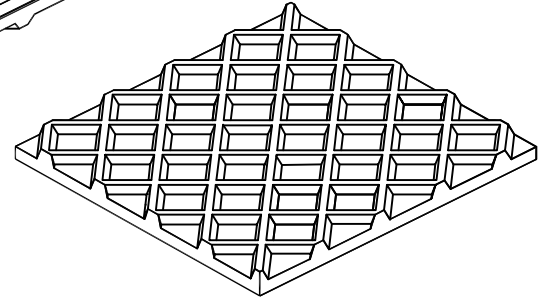
**HIGH SPEED 1500 CPM AND UP**

EP - PAD eliminates noise and reduces vibration transmitted from:

- ENGINES
- TRANSFORMERS
- PUMPS and PIPING
- STEAM GENERATORS
- CRUSHERS



1/2" THICK



1/4" THICK

**MEDIUM SPEED 250 CPM TO 1500 CPM**

EP - PAD simplifies mounting and limits noise transmission from:

- COMPRESSORS (TANK MOUNTED)
- AIR CONDITIONERS
- FANS

**LOW SPEED 0 TO 250 CPM**

EP - PAD limits impact shock and noise transmission from:

- PUNCH PRESSES
- SHEARS
- BUSINESS MACHINES
- HAMMERS AND PRESSES

**LOW SPEED AND HIGH SPEED 0 TO 250 CPM AND 1500 CPM AND UP**

EP - PAD protects these sensitive instruments, machines and devices from low frequency shocks and high frequency vibrations present in the floor:

- GRINDERS
- SURFACE PLATES
- MACHINE TOOLS
- INSTRUMENTS

**LOAD CAPACITY**

Load capacity to 60 lbs/Sq. inch.

**THICKNESS**

1/4" Waffle on one side.

1/2" Waffle on two sides.

**NON - SKID**

Thread surfaces resist "Walking".

**DURABLE**

Material is oil and ozone resistant Neoprene.

FACTORY CUT SIZES LISTED							
SIZE (Inches)	Max.Load Selection at 40 P.S.I.	SIZE (Inches)	Max.Load Selection at 40 P.S.I.	SIZE (Inches)	Max.Load Selection at 40 P.S.I.	SIZE (Inches)	Max.Load Selection at 40 P.S.I.
2 x 2	160	3 x 3	360	4 x 4	960	9 x 9	3240
2 x 3	240	3 x 6	720	4 x 6	960	9 x 12	4320
2 x 4	320	3 x 9	1080	4 x 9	1440	9 x 18	6480
2 x 6	480	3 x 12	1440	4 x 12	1920	12 x 12	5760
2 x 12	960	3 x 18	2160	4 x 18	2880		
2 x 18	1440	3 x 24	2880	4 x 24	3840	12 x 18	8640
2 x 24	1920	3 x 36	4320	4 x 36	5760	12 x 24	11520
2 x 36	2880	3 x 72	8640	4 x 180	28800	12 x 180	86400
2 x 72	5760	3 x 180	21600	6 x 6 6 x 9 6 x 12 6 x 18 6 x 36 6 x 180	1440 2160 2880 4320 8640 43200	18 x 18	12960
2 x 180	14400					18 x 24	17280
						24 x 24	23040
						24 x 36	34560
						36 x 36	46080



CALIFORNIA DYNAMICS CORPORATION  
5572 ALHAMBRA AVE. LOS ANGELES CA, 90032  
PH. 323-223-3882 FAX. 323-223-7941  
email: caldyn@earthlink.net

"CALL US - TO SET THINGS RIGHT"

Assoc. Member



JOB:

CUSTOMER:

TAG:

Dwg. No.

F373

Date

7/26/16

PREP By:

Date

CHKD By:

Date

DO NOT SCALE DRAWING

TYPE

EP

NEOPRENE PAD