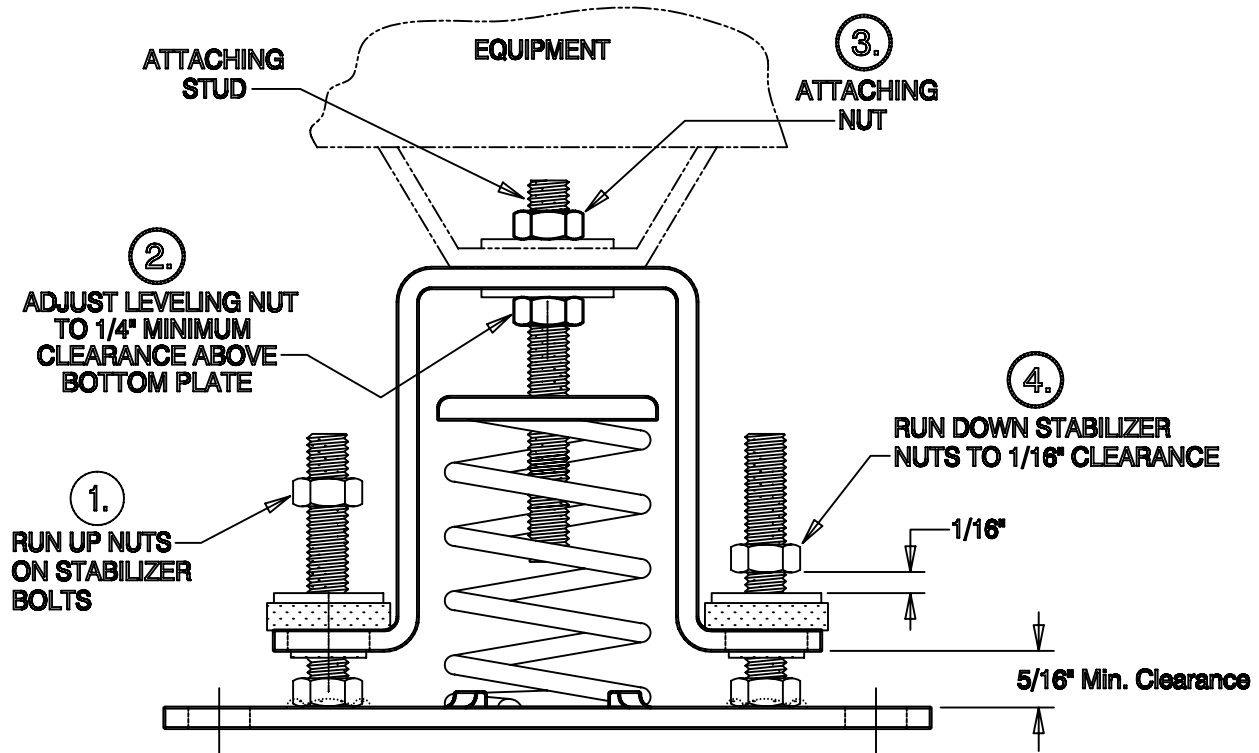


INSTALLATION INSTRUCTIONS

TYPE 9842

Attaching Style V
Spring Vibration Isolator

FILE 78V



THESE HIGH QUALITY ISOLATORS ARE EQUIPPED WITH STABILIZER BOLTS AND LEVELING NUT WHICH MUST BE PROPERLY ADJUSTED TO PROVIDE FULL ISOLATION. THEY MAY BE BOLTED TO ANY MOUNTING SURFACE THAT IS WITHIN 1/4" OF BEING FLAT & LEVEL. AFTER POSITIONING THE EQUIPMENT SQUARELY ON THE ISOLATORS, USE THE FOLLOWING ADJUSTMENT PROCEDURE:

- 1.** Run up the two stabilizer nuts to the top of the stabilizer bolts.
- 2.** Adjust the leveling nut on each isolator to level the equipment and distribute the load as evenly as possible, allowing 5/16" minimum clearance above the base plate. Attaching nut should not be engaged yet. Grip attaching stud to twist up or down or prevent travel as needed.
- 3.** Engage and tighten attaching nut.
- 4.** Run down the stabilizer nuts until there is 1/16" clearance above the washer on each stabilizer bolt. **NOTE:** Stabilizer nuts alone must not be used to level equipment.