

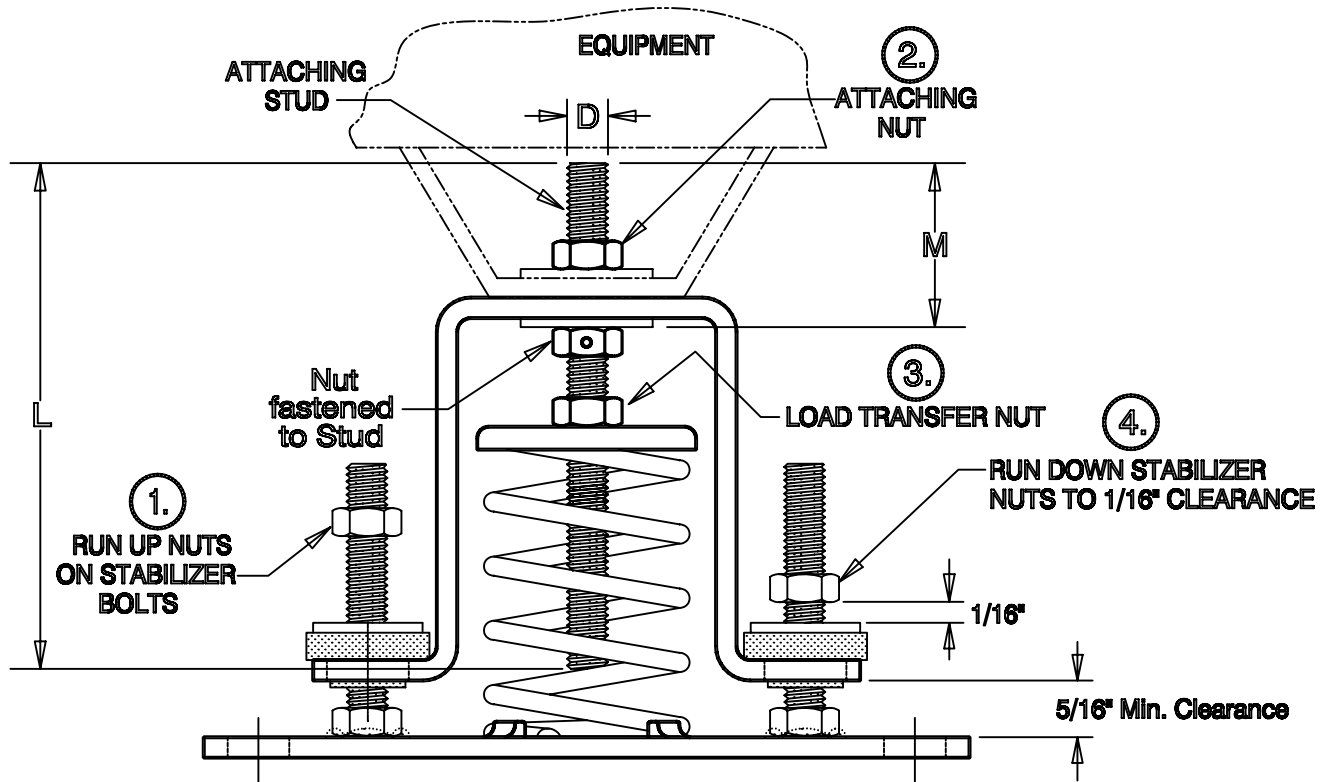
# INSTALLATION INSTRUCTIONS

TYPE JQ

TYPE OS

Attaching Style K  
Isolator/Restraints

FILE 78 K



THESE HIGH QUALITY ISOLATORS ARE EQUIPPED WITH STABILIZER BOLTS AND LOAD TRANSFER NUT WHICH MUST BE PROPERLY ADJUSTED TO PROVIDE PROPER ISOLATION. BOLT TO MOUNTING SURFACE THAT IS WITHIN 1/4" OF BEING FLAT & LEVEL. AFTER POSITIONING THE EQUIPMENT ON THE BOLTED IN PLACE ISOLATORS, USE THE FOLLOWING ADJUSTMENT PROCEDURE:

1. Run up the two stabilizer nuts to near the top of the stabilizer bolts.
2. Engage and tighten attaching nuts.
3. Adjust the load transfer nut of each isolator to float and level the equipment, allowing 5/16" minimum clearance above the base plate.
4. Run down the stabilizer nuts until there is 1/16" clearance above the washer on each stabilizer bolt. **NOTE :** Stabilizer nuts alone must not be used to level equipment.

SIZE	D	L	M
A	3/8-NC	4 5/8	1 1/2
B	1/2-NC	5 3/4	1 3/4
E	5/8-NC	5 1/2	2