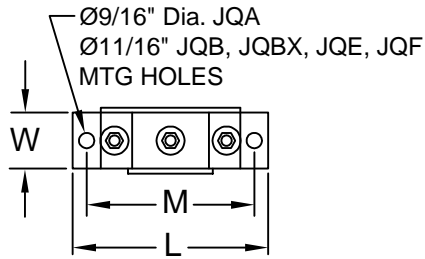
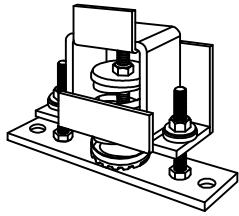
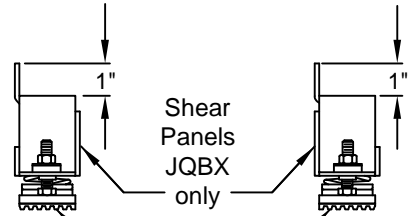


**JQBX Style R**  
shown

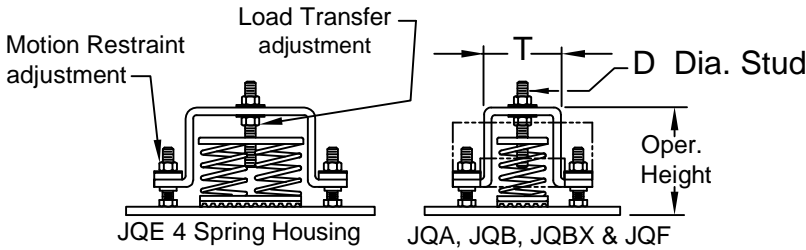


**Style R**  
for attaching  
to opposite  
side of  
equipment.



**Style Q**  
for attaching  
to opposite  
side of  
equipment.

Neoprene Base Pad Regardless of Style



**Style V or K**

**Notes:**

Dimensions in Inches. Loads in Pounds.

Style K Load Transfer Nut is pinned to stud.

Neoprene pad 1/4" thick under spring regardless of style.

Adjust Load Transfer while Motion Restraint adjustments are loose.

All Type JQ Isolator/Restraints feature large diameter springs with O.D. not less than 80% of rated deflection height, except 1580 with 2-1/4" travel to collapse.

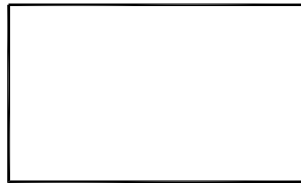
For compact support of heavy loads, some JQ's include inner springs.

For low profile support of heavy loads, JQE's have clustered springs.

**Surface Treatment**

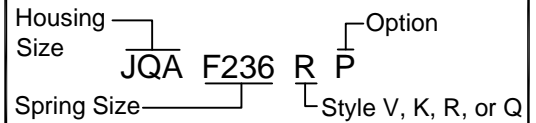
Housings Hot Dip Galvanized (HDG)  
Hardware Zinc Plate.  
Springs Powder Coated or Zinc Plated.

**Isolator Locations**



| Isolator Locations | Isolator Selections |
|--------------------|---------------------|
|                    |                     |
|                    |                     |
|                    |                     |
|                    |                     |
|                    |                     |
|                    |                     |

**TYPICAL CALLOUT**



**RATED LOAD**

F Springs 2" Deflection

| JQA  | JQB/JQBX | JQE   | JQF   |
|------|----------|-------|-------|
| F33  | FT121    | F332  | F1159 |
| F59  | FT171    | F480  | F1408 |
| F83  | FT241    | F620  | F1710 |
| F120 | F348     | F780  | F2149 |
| F155 | F453     | F944  | F2700 |
| F195 | F590     | F1200 |       |
| F236 | F676     | 1580  |       |
| F300 | F787     |       |       |
|      | F918     |       |       |

| OPA - 0070<br>PRE-APPROVED MAXIMUM<br>ALLOWABLE LOADS |        |       |
|---|--------|-------|
| SIZE  | HORIZ. | VERT. |
| JQA   | 800    | 1660  |
| JQB   | 1000   | 1600  |
| JQBX  | 1500   | 2000  |
| JQE   | 3200   | 4300  |

| Housing Size | L      | W     | M  | T       | D   | Approx. Oper. HT. |
|--------------|--------|-------|----|---------|-----|-------------------|
| JQA          | 7      | 2     | 6  | 2 - 3/4 | 3/8 | 4 - 1/2           |
| JQB/JQBX     | 10-1/2 | 3-1/2 | 9  | 4       | 1/2 | 5 - 1/2           |
| JQE          | 14     | 5     | 12 | 6       | 5/8 | 5                 |
| JQF          | 14     | 5     | 12 | 6       | 5/8 | 8                 |



CALIFORNIA DYNAMICS CORPORATION  
5572 ALHAMBRA AVE. LOS ANGELES CA, 90032  
PH 323-223-3882 FAX 323-223-7941

email: caldyn@earthlink.net  
"CALL US - TO SET THINGS RIGHT"

Assoc. Member



JOB: \_\_\_\_\_  
CUSTOMER: \_\_\_\_\_  
TAG: \_\_\_\_\_

Dwg. No. **F309** Date **02/11/14**  
PREP By: \_\_\_\_\_ Date \_\_\_\_\_  
CHKD By: \_\_\_\_\_ Date \_\_\_\_\_  
DO NOT SCALE DRAWING

TYPE **JQ**  
ISOLATOR/RESTRAINTS  
WITH CALIFORNIA  
PRE-APPROVED  
SEISMIC PROTECTION  
OPA - 0070  
2" DEFLECTION