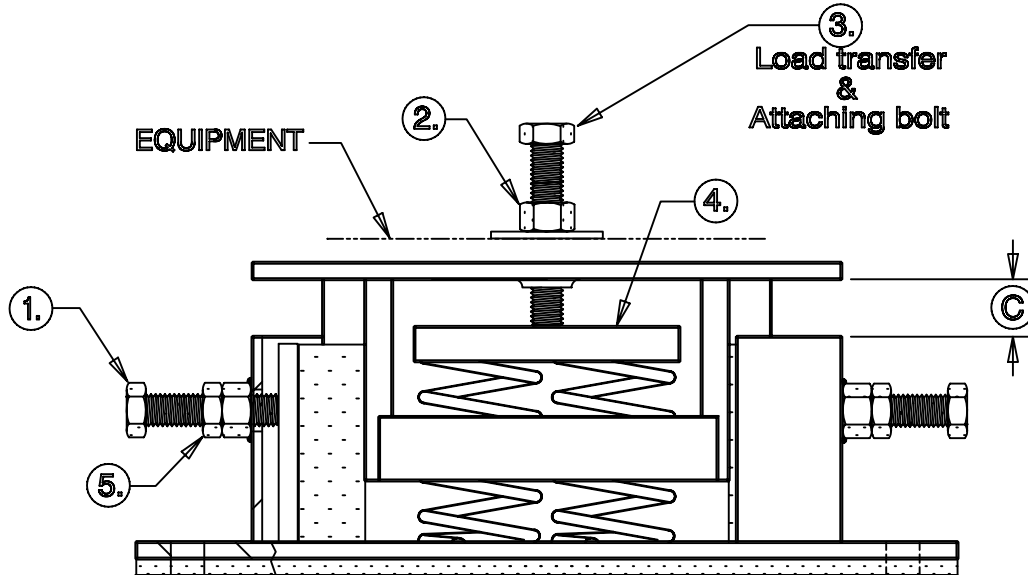


TYPE GJ
INSTALLATION
AND ADJUSTMENT
INSTRUCTIONS

FILE 81



INSTALLATION

1. ISOLATORS are shipped complete. Installer to provide anchor bolts only.
2. Bottom of isolators to be in same plane -- shim as required.
3. Back off both side damper locking nuts (5) and adjust bolts (1).
4. Place equipment on isolators.
5. After running Nuts (2) up, insert Bolt (3) through equipment mounting holes and thread into top plate to contact Pressure Plate (4).
6. Turn (3) down stepwise by isolator to equally transfer load to springs and lift the equipment gradually. When the equipment is fully supported by springs, turn (3) at low corner or end to level equipment. All isolators should have a minimum clearance C of approximately 1/4" to 3/8". Run Locking Nut (2) down and tighten.

DAMPING PROCEDURE

1. Turn both side damping Bolts (1) finger tight.
2. Operate the equipment. Further control of starting and stopping movement is accomplished by increasing damping Nut turns to acceptable movement.

CAUTION: DO NOT OVER TIGHTEN DAMPING NUTS ATTEMPTING TO REDUCE NORMAL RUNNING MOTION.

3. Tighten both locking Nuts (5) to lock damper setting.

NOTE: Initial start and stop of equipment will produce a greater movement than normal running.