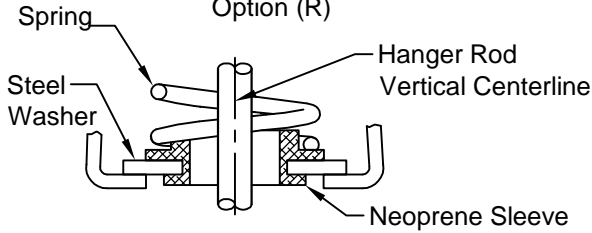
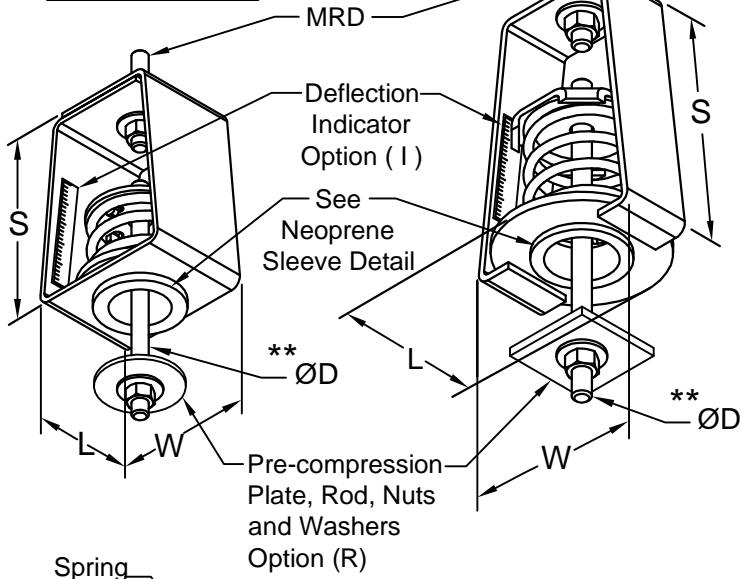


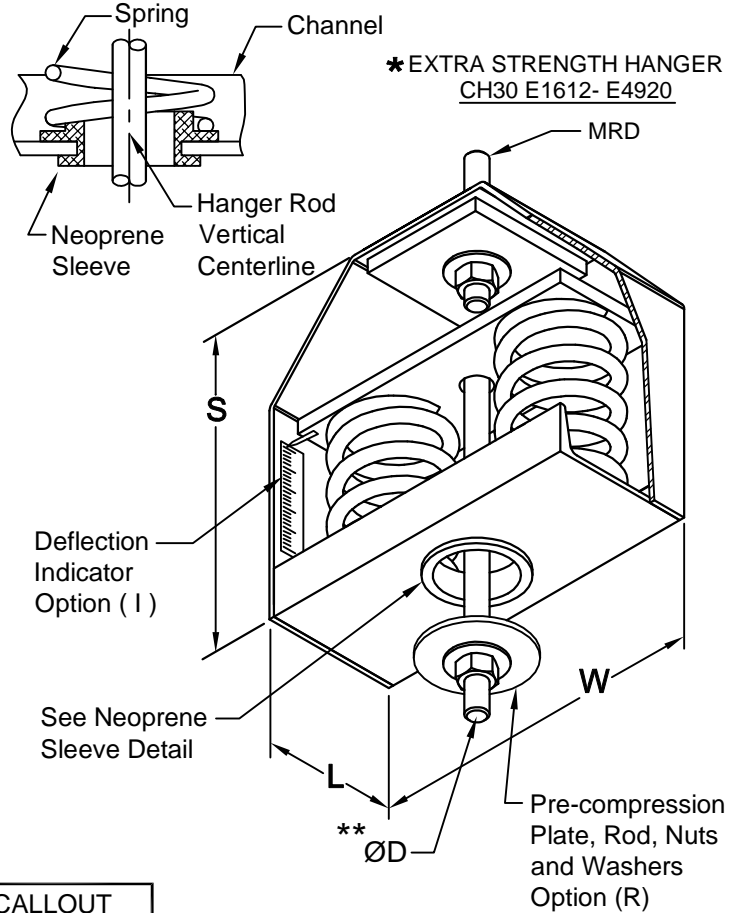
BASIC HANGER
CH30 ET347 - ET1326

LIGHT WEIGHT HANGER
CH30 ET20 - ET255



NEOPRENE SLEEVE DETAIL

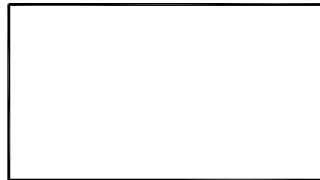
NEOPRENE SLEEVE DETAIL



***EXTRA STRENGTH HANGER**
CH30 E1612- E4920

TYPICAL CALLOUT
CH30 - ET 129 - R1
(Type) - (Load) - (Options)

HANGER LOCATION



| HANGER SELECTION | HANGER LOCATION |
|------------------|-----------------|
| | |
| | |
| | |
| | |
| | |
| | |

| CH30 Max. Load (lbs) | DIMENSIONS (Inches) | | | | |
|---|---------------------|--------|-------|-------|-------|
| | S | W | L | MRD | ØD |
| ET20 ET42 ET80 ET129 ET194 ET255 | 4-3/4 | 3-5/8 | 2-1/2 | 1/2 | 1/2 |
| ET347 ET473 | 6 | 5-5/16 | 4-1/4 | 3/4 | 5/8 |
| ET667 ET940 ET1326 | 7 | 5-7/8 | 4-3/4 | 7/8 | 3/4 |
| E1612* | | | | | 7/8 |
| E2060* E2460* E2980* | 8-1/4 | 10 | 4 | 1 | 1 |
| E4120* E4920* | 8-1/2 | 9-1/2 | 7 | 1-1/8 | 1-1/8 |

Type CH30 is used where uncertain alignment is anticipated during installation. At normal load the hanger rod will operate to a full 15° tilt in any direction from vertical centerline.

Spring rated deflection is 1".

* The housings of these units are specially reinforced for extra strength.

All housing sizes have been tested to carry 5 times maximum load without failure.

**The pre-compression rod is furnished with units which have the "R" option, specify Rod Diameter. This rod will extend about 3" below the Neoprene sleeve.

Maximum Rod Diameter (MRD)
Threaded rod, nuts and washers by others.



CALIFORNIA DYNAMICS CORPORATION
5572 ALHAMBRA AVE. LOS ANGELES CA, 90032
PH 323-223-3882 FAX 323-223-7941

email: caldyn@earthlink.net
"CALL US - TO SET THINGS RIGHT"

Assoc. Member



JOB: _____
CUSTOMER: _____
TAG: _____

Dwg. No. **F595** Date **01/03/14**
PREP By: _____ Date _____
CHKD By: _____ Date _____

TYPE
CH30
15° Tilt
1" DEFLECTION
SPRING HANGER

DO NOT SCALE DRAWING