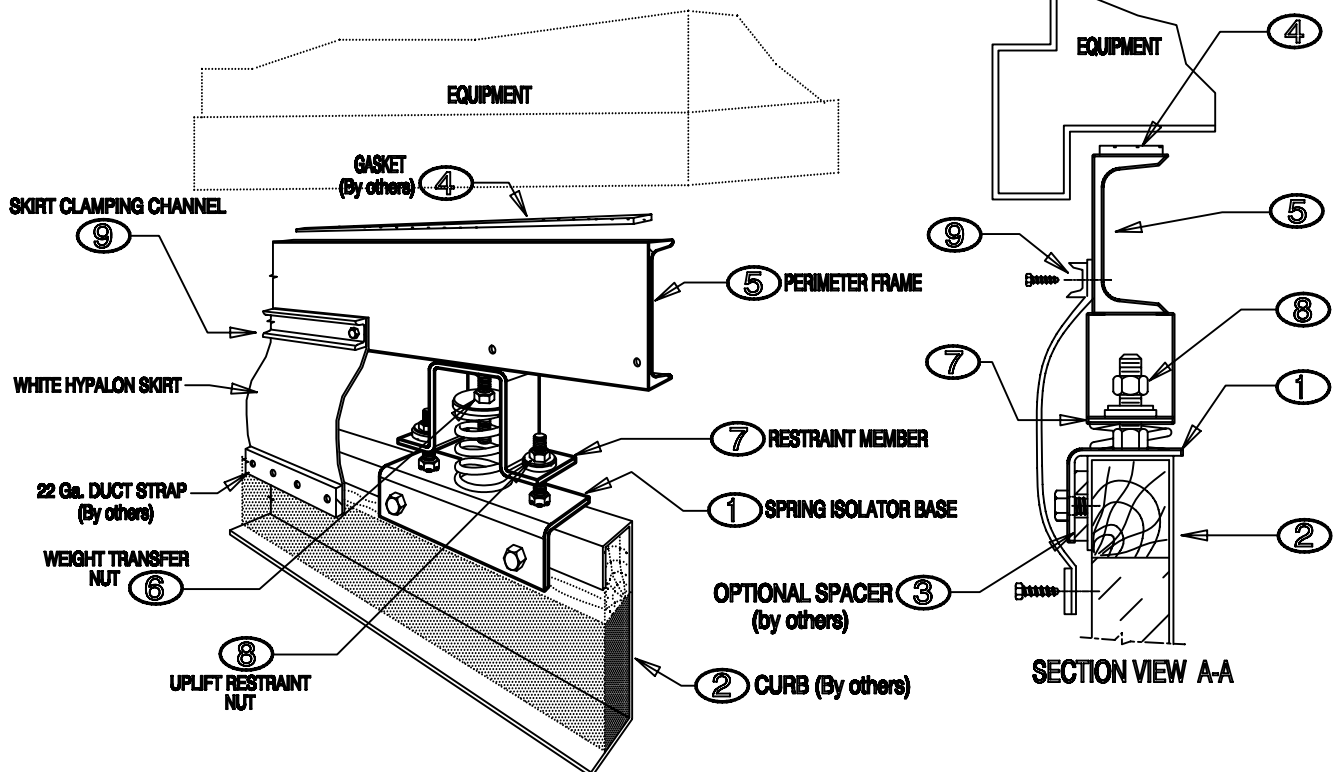


TYPE YW
 SPRING PERIMETER FRAME
 INSTALLATION
 INSTRUCTIONS

FILE 29



- A Place spring isolator bases (1) on curb (2). Lag bolt bases (1) to curb (2) using spacers (3) if needed to preserve alignment. Do not overtighten.
- B Place gasket (4) (supplied with curb, by others) on top of Perimeter Frame (5).
- C Position equipment on gasket (4) on Frame (5).
- D Turn weight transfer nuts (6) down to support equipment weight on springs while member (7) clears base (1) by approximately 1/4". Uplift restraint nuts (8) must be positioned to allow approx. 1/8" motion up of restraint member (7). Rocking equipment may cause springs to bottom.
- E Remove 1" skirt channel (9).
- F Working on one side of perimeter frame (5) at a time, place a thin layer of sealant caulking compound on perimeter frame (5) covering 1" from bottom. Position Neoprene skirt and punch holes in it at holes in perimeter frame (5). Place another thin layer of sealant on top of skirt.
- G Secure skirt to perimeter (5) with 1" channel (9).
- H Repeat F and G until upper frame complete.
- J Repeat steps for lower skirt securing with wood screws or nails.

NOTE: CURB (by others) MAY NEED BRACING (by others) AT ISOLATOR LOCATIONS TO PREVENT BENDING OF CURB.