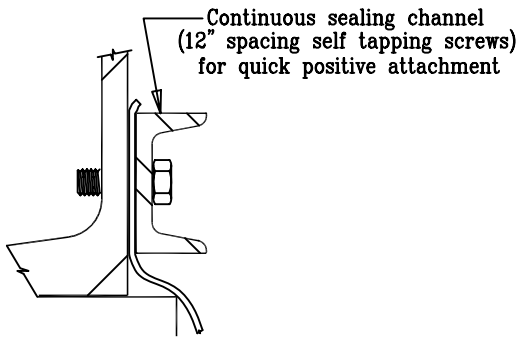


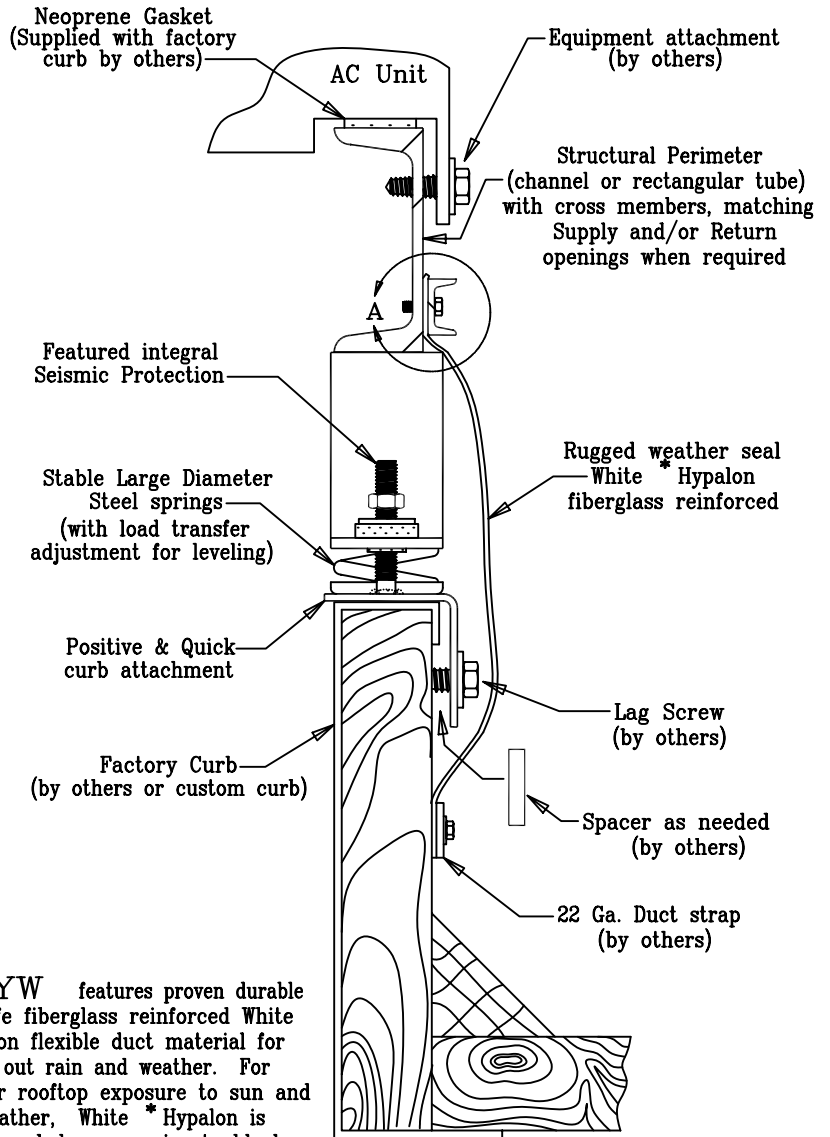
TYPICAL CURB MOUNTED UNIT



DETAIL A

Type YW Perimeter spring isolators are specifically designed to provide quick, easy and effective spring isolation for any Curb Mounted Unit. Seismic protection that satisfies the uniform building code (standard at no extra charge) also protects from potentially damaging high winds.

Type YW features proven durable long life fiberglass reinforced White \*Hypalon flexible duct material for sealing out rain and weather. For exterior rooftop exposure to sun and weather, White \*Hypalon is recommended as superior to black \* Neoprene by Dupont, the developer and producer of both materials.



OTHER ADDED FEATURES OF YW PERIMETER SPRING ISOLATORS

- Normally shipped in one piece.
- Quick trouble free installation on rooftop curbs.
- Easy access to springs for adjustment or inspection.
- Seismic calculations by Registered Structural Engineer when specified.

\* DUPONT



CALIFORNIA DYNAMICS CORP.  
5572 ALHAMBRA AVENUE,  
LOS ANGELES, CA 90032  
PH (323) 223 3882 FX (323) 223 7941

"CALL US - TO SET THINGS RIGHT"

Assoc. Member



JOB:		DWG No.	
CUST:		PREP BY:	Date:
TAG:		CHKD:	Date:
SHEET	OF	REV.	

TYPE YW PERIMETER SPRING-ISOLATOR 1", 2", OR 3" STATIC DEFLECTION	
REV	0