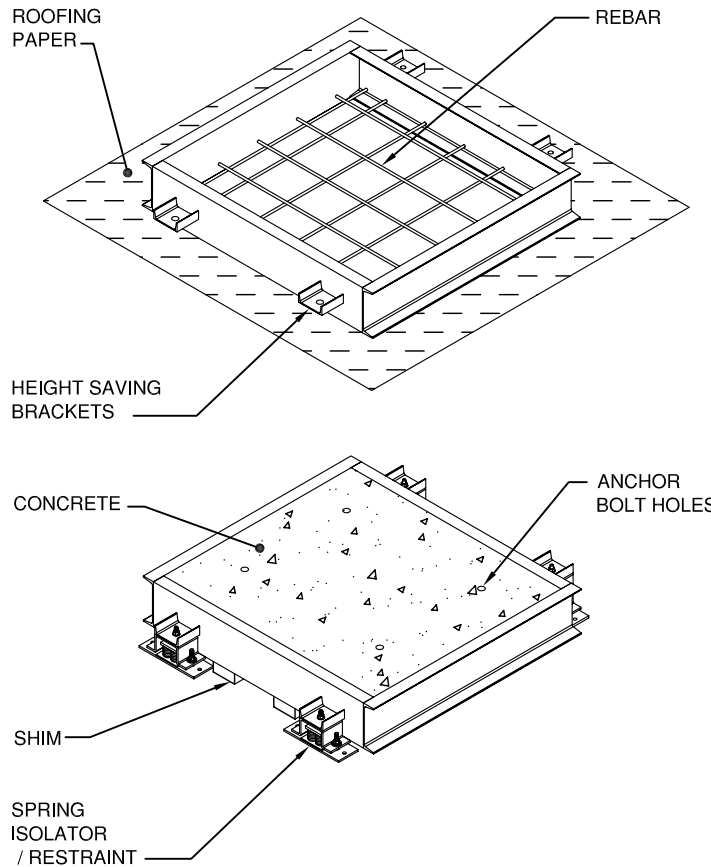


TYPE **CW**
INERTIA BASE FRAME
INSTALLATION
INSTRUCTIONS

FILE 100



INSTALLATION AND ADJUSTMENT PROCEDURE FOR TYPE "CW" INERTIA BASE FRAME W/ ISOL./REST.

1. COVER OPERATING LOCATION WITH PLASTIC SHEATHING OR ROOFING PAPER.
2. PLACE INERTIA BASE FRAME ON PAPER. FRAME SHOULD BE ORIENTED SO THAT REBAR IS LOCATED TOWARD THE BOTTOM OF THE BASE.
3. POUR CONCRETE INTO FRAME UNTIL LEVEL WITH TOP AND ALLOW CONCRETE TO CURE.
4. AFTER CONCRETE HAS SET, ELEVATE FRAME AS SPECIFIED ON BASE DRAWING.
5. CHECK SUBMITTAL DRAWING FOR CORRECT FLOOR CLEARANCE TO SIZE SHIM. PLACE A SHIM NEXT TO EACH BRACKET BETWEEN THE INERTIA BASE AND THE HOUSEKEEPING PAD TO HOLD THIS POSITION.
6. PROCEED TO INSTALL EQUIPMENT.
7. ONCE EQUIPMENT IS INSTALLED, LOCATE ISOLATORS UNDER H.S. BRACKETS AND PROCEED TO LEVEL SPRINGS IN ACCORANCE WITH INSTALLATION INSTRUCTIONS. SEE ISOLATOR/ RESTRAINT INSTALLATION INSTRUCTIONS.
8. AFTER THE BASE IS LEVEL AND LOAD IS TRANSFERRED TO SPRINGS, PUT SHIMS BACK UNDER INERTIA BLOCK AND PROCEED TO INSTALL THE REST OF THE PIPE SYSTEM.
9. REMOVE SHIMS, THE INERTIA BLOCK SHOULD STILL BE FLOATING.
10. EQUIPMENT IS NOW READY FOR OPERATION.