



**CALIFORNIA DYNAMICS CORP.**  
 LOS ANGELES, CA. 90032-3106  
 PH (323) 223 - 3882  
 FAX (323) 223 - 7941  
 email: caldyn@earthlink.net

**APPROVED**  
 Fixed Equipment Anchorage  
 Office of Statewide Health Planning and Development



OPA-0070  
 on Wednesday, December 01,  
 2004

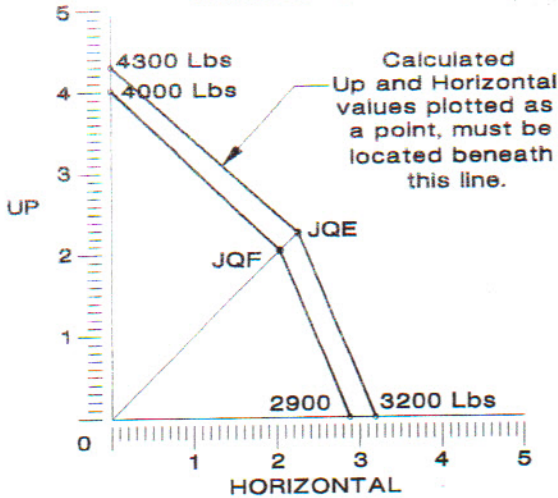
\*\*\*\* Valid for 3 Years Maximum \*\*\*\*

*John D. Gillengerten*  
 John D. Gillengerten (916)654-3547

**TYPE JQ**  
 ISOLATOR/RESTRAINT  
 W/CALIF.PRE-APPROVED  
 SEISMIC PROTECTION  
 OPA - 0070

FILE 304 11/08/04

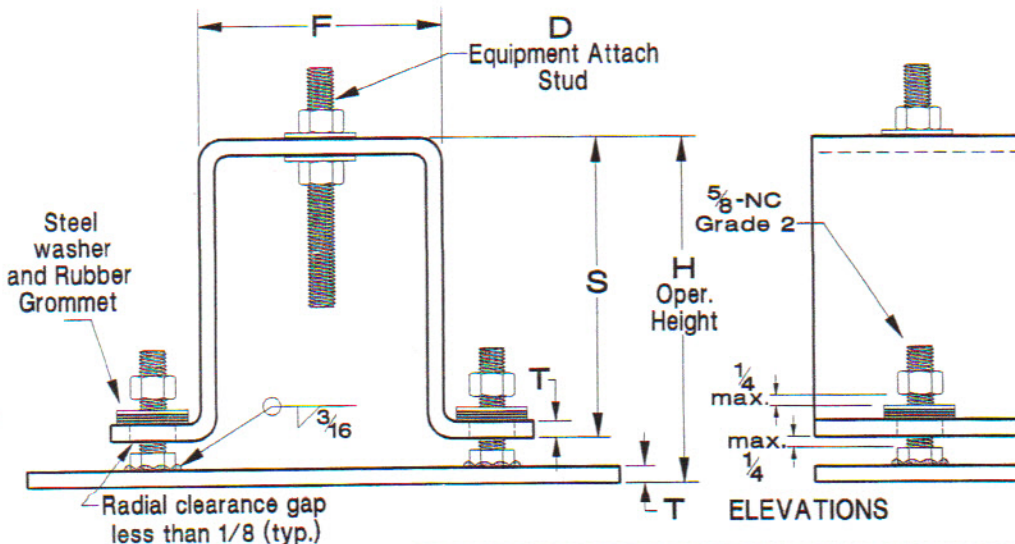
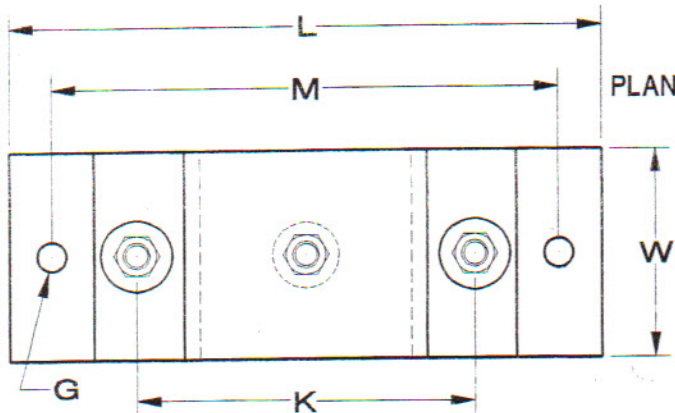
INTERACTION CURVE



**NOTICE**  
 301 File page describing  
 PRE-APPROVAL USE  
 and applicable NOTES  
 is included in this  
 OPA-0070 PRE-APPROVAL



ALLOWABLE STRESS DESIGN		
MECHANICAL AND ELECTRICAL COMPONENTS COEFFICIENTS		
Mechanical and Electrical Component or Element	Component Amplification Factor $a_p$	Component Response Modification Factor $R_p$
HVAC System Vibration Isolated	2.5	1.5
General Electrical Equipment	2.5	1.5
JQ Maximum clearance not greater than 1/4 inch Design force may be taken as $F_p$		



All dimensions in inches.

	JQE	JQF
L	14	14
W	5	5
D	5/8-NC	5/8-NC
M	12	12
H	5	8
G	11/16	11/16
K	8	8
F	6	6
S	4	7
T	3/8	3/8
U	3/8	1/2