



CALIFORNIA DYNAMICS CORP.

LOS ANGELES, CA. 90032-3106

PH (323) 223 - 3882

FAX (323) 223 - 7941

email: caldyn@earthlink.net

APPROVED
Fixed Equipment Anchorage
Office of Statewide Health Planning and Development



OPA-0070

on Wednesday, December 01,
2004

**** Valid for 3 Years Maximum ****

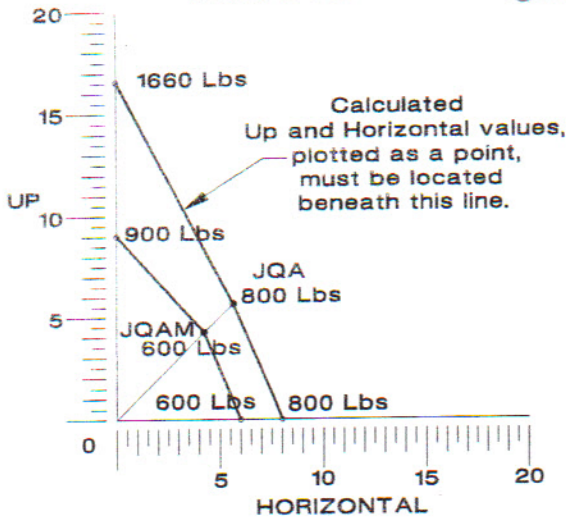
John D. Gillengerten
John D. Gillengerten (916)654-3547

TYPE JQ
ISOLATOR/RESTRAINT
W/CALIF.PRE-APPROVED
SEISMIC PROTECTION
OPA - 0070

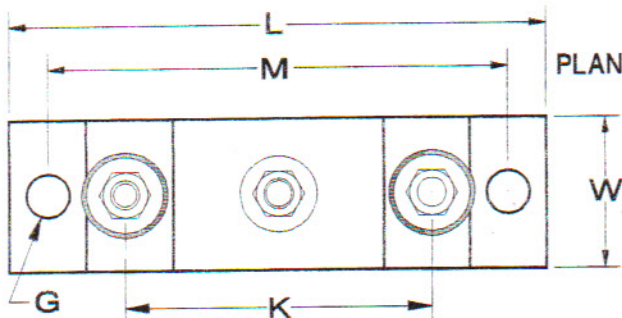
FILE 302

11/08/04

INTERACTION CURVE



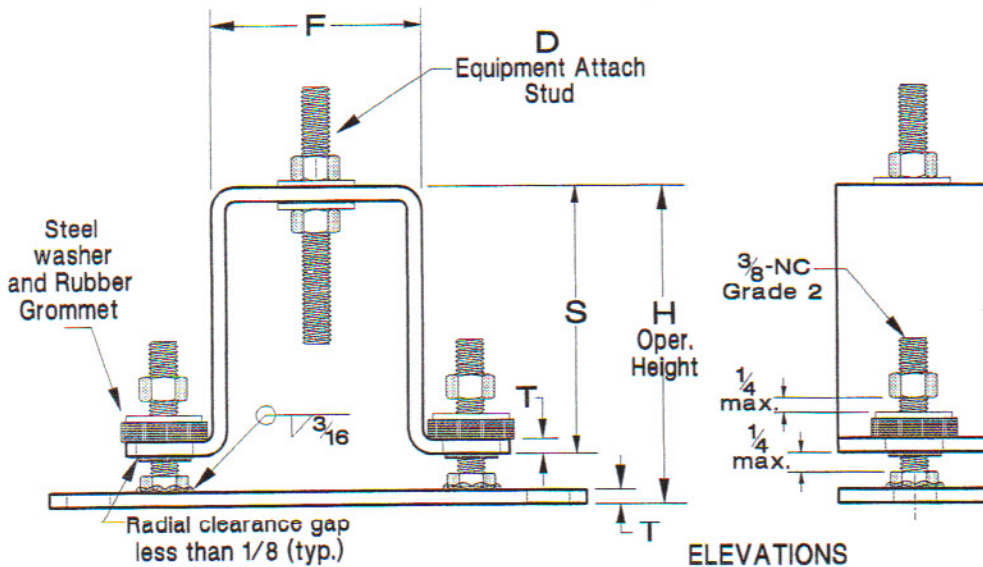
NOTICE
301 File page describing
PRE-APPROVAL USE
and applicable NOTES
is included in this
OPA-0070 PRE-APPROVAL



ALLOWABLE STRESS DESIGN		
MECHANICAL AND ELECTRICAL COMPONENTS COEFFICIENTS		
Mechanical and Electrical Component or Element	Component Amplification Factor a_p	Component Response Modification Factor R_p
HVAC System Vibration Isolated	2.5	1.5
General Electrical Equipment	2.5	1.5

JQ Maximum clearance not greater than 1/4 inch
Design force may be taken as F_p

All dimensions in inches.



	JQAM	JQA
L	7	7
W	2	2
D	3/8-NC	3/8-NC
M	6	6
H	2 1/2	4 1/2
G	9/16	9/16
K	4	4
F	2 3/4	2 3/4
S	1 3/4	3 1/2
T	1/8	3/16

ELEVATIONS