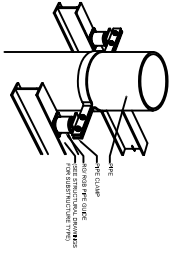
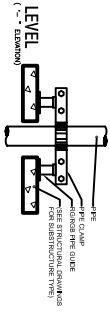


VIBRATION/ ISOLATION & SEISMIC DETAIL

R6/ R6B - RISER GUIDE

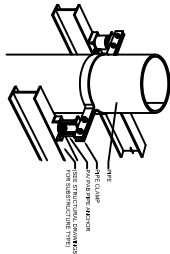


**PIPE RISER SYSTEM**

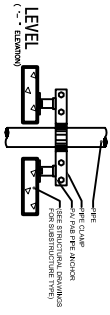


VIBRATION/ ISOLATION & SEISMIC DETAIL

P2A/P2B - RISER PIPE ANCHOR

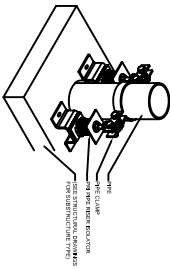


**PIPE RISER SYSTEM**



VIBRATION/ ISOLATION & SEISMIC DETAIL

P2C - RISER PIPE ISOLATOR



**PIPE RISER SYSTEM**

